



Benches



3, 4 & 5 Row Benches

Our multi-use aluminium spectator stand is manufactured in the standard version with three levels of seats 3 metres long. There is ample space for up to 18 persons (6 persons per level). The different levels also guarantee a good view of the events taking place. The complete construction of our versatile spectator stand is manufactured from aluminium. The seating area and the steps are made from special aluminium profiles and are additionally anodised and treated to be non-slip. The stand comes in kit form which can be assembled (3 supporting legs, 3 benches, 2 foot rests and the necessary screws and bolts). The robust construction means not only that on-site assembly is quick, it also guarantees that the spectator stand is highly durable.

Order No. 130035

Transport wheel for Bleacher,
Made from Nylon Diameter 200 mm.

Order No. 130039

Aluminium bleacher 3 rows, length 2.4 m

Order No. 130040

Aluminium bleacher 3 rows, length 3 m

Order No. 130050

Aluminium bleacher 3 rows, length 4m

Order No. 130060

Aluminium bleacher 3 rows, length 5m

Order No. 130070

Aluminium bleacher 4 row length 3m

Order No. 130100

Aluminium bleacher 4 row length 4m

Order No. 130110

Aluminium bleacher 4 row length 5m

Order No. 130120

Aluminium bleacher 4 row length 6m

Order No. 130130

Aluminium bleacher 5 rows, length 3m

Order No. 130140

Aluminium bleacher 5 rows, length 4m

Order No. 130150

Aluminium bleacher 5 rows, length 5m

Order No. 130160

Aluminium bleacher 5 rows, length 6m

Order No. 130039

Aluminium bleacher 3 row length 2.4 m

Order No. 130040

Aluminium bleacher 3 row length 3 m

Order No. 130050

Aluminium bleacher 3 row length 4m

Order No. 130060

Aluminium bleacher 3 row length 5m

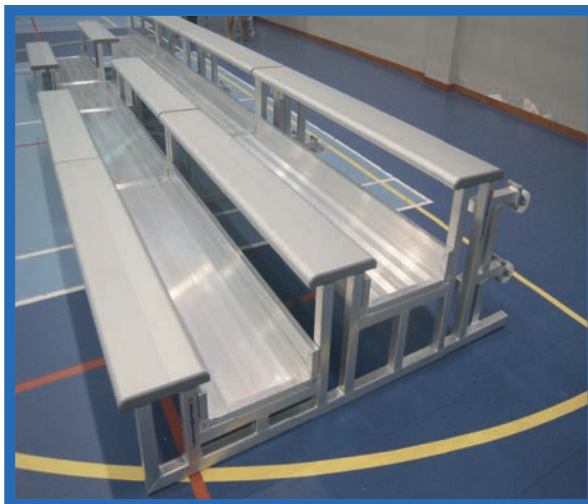




Bleacher MOBILE TOP

Order No. 130250

Our "MOBILE TOP" bleacher can be used unlimited - in- and outdoors for every kind of activity. Within a short time 50 seats become available! By simple add-on of the sets the seat capacity can be increased. Another advantage is the little storage room. Due to a special moving system the single bleacher parts can be put into each other, so the whole system only requires a storage area of approx. 4 m x 2 m. The seats and walkways are made from special aluminium profiles and are additionally anodised and treated to be non-slip. One complete set consists of 5 blocks of different lengths (one of which is a staircase). Total length 8.75 m. Depth 1.85 m. Height 0.85 m.





3 Row Bench “FLIP UP”

Order No. 139600

Our new 3 Row Bench FLIP UP is made from special aluminium profile with anti-slip step surface. Easy and fast set up. Good alternative for stationary installed bleachers. Easy to remove anywhere anytime. Weight approx. 110 KG only. Stable and absolutely weatherproof construction. Usable for indoors and outdoors.



Swedish Bench (ALULINE)

Swedish bench, made of aluminium special profile, 30 cm wide, High 30 cm, seat anodised colour.

130180: Length 3.00 m

130190: Length 4.00 m

130170: Length 5.00 m

130200: Length 6.00 m



Aluminium Bench (PARIS)

The locker bench is made from special aluminium profiles. All profiles are designed with rounded edges. The seating profile measures an extra-large width of 300 mm. It measures a height of 45 cm. The bench is welded in one piece. It is also equipped with a shoe tray. The item is powder coated. There are assorted colours to choose from. The bench is available in different lengths:

130500: Length 2.00 m

130510: Length 3.00 m

130520: Length 4.00 m

130530: Length 5.00 m

130540: Length 6.00 m

130550: Length on request



3, 4 & 5 Row Benches "Valencia I" with Plastic seat and staircase

Our multi-use aluminium spectator stand is manufactured in the standard version of 5 seats per row and 3 metres long. There is ample space for up to 20 persons for our 4 row bench (5 persons per level). The different levels also guarantee a good view of the events taking place. The complete construction of our versatile spectator stand is manufactured from aluminium. The seating area is supplied with low back rest plastic seat and the steps are made from special aluminium profiles and are additionally anodised and treated to be non-slip. The stand comes in kit form which can be assembled. The robust construction means not only that on-site assembly is quick, it also guarantees that the spectator stand is highly durable.

138000 Aluminium bleacher 3 row length 3 m

138010 Aluminium bleacher 3 row length 4 m

138020 Aluminium bleacher 3 row length 5 m

138030 Aluminium bleacher 3 row length 6 m

138040 Aluminium bleacher 4 row length 3 m

138050 Aluminium bleacher 4 row length 4 m

138060 Aluminium bleacher 4 row length 5 m

138070 Aluminium bleacher 4 row length 6 m

138080 Aluminium bleacher 5 row length 3 m

138090 Aluminium bleacher 5 row length 4 m

138100 Aluminium bleacher 5 row length 5 m

138110 Aluminium bleacher 5 row length 6 m

130035 Transport wheel for Bleacher, Made from Nylon Diameter 200 mm.

Other dimensions on request.

5 Row Benches "Valencia" with Plastic seat and staircase



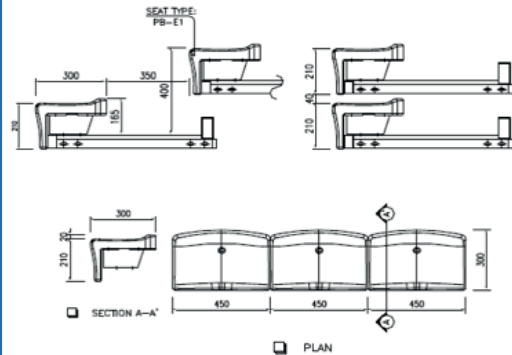
Order No. 139000

The five row bench 'Vindico II' with plastic seats and staircase is made of aluminium structure and plastic seats. The bench provides five rows of seating and has a total capacity of 31 seats. The bench measures a length of 3.1 m. The seats are made of UV protected plastic. The stairs are made from a special aluminium profile. The profiles are anodized and have an anti-slip surface. The system is dismantling and can be easily assembled at any site.

Order No.130035

Transport wheel for Bleacher. Made from Nylon Diameter 200 mm

Other dimensions on request



Retractable Seating

SPECIFICATION

BENCH SHELL : HIGH DENSITY POLYETHYLENE BLOW-MOLD.

Deck Frame : Steel deck frame is base on platform that will cover loading of spectators. It is composed of front girder (60 x 40x 2.3mmT), rear girder (125 x 75 x 3.2mmT) and intermediate steel connector (60 x 40 2.3mmT), which is strong enough to maximum load of spectators on the platform and space of every intermediate steel connector less than 500mm distance for safety & stable and is welded properly to front & rear girder. Front channel steel sheet (200 x 80 7.5mmT), of first row is for connecting the operation device I.e. Electrical operation units. Deck Frame can be connected parallel direction another one and fixed the Handrails one side. The size of deck frame is 5250mm width and 1800mm (2row) depth follow to type of scales required.

Platform : The deck frame welded firmly shall be covered with 18mm thickness plywood for sound absorption. The platform shall be also finished by carpet with wooden colour or other various colour with section. Manufactures standard size of platform is same as deck frame.

Finish Of Under structure : Main steel parts of under structure, i.e. Deck Frame, Support Column & Braces etc. shall be painted with alkyd primer (1st Coat) and finish urethane paint (2nd coat) for rust and dust free under the cruel environment, such as seaside, swimming pool, etc..

Manual Pulling Unit : Manual pulling unit included for one (1) or two (2) person and two (2) wheels (PVC/rubber Ø 3" x 1¼"T) and shall be connected into the hole on front face or first row. Its dimension will be available to change follow to length of row and height of blocks.



Grand Stand

Our spectator stand is manufactured in the standard version with five levels of seats 3.4 metres long and 2.70 metres width. There is ample space for up to 30 persons (6 persons per level). The different levels also guarantee a good view of the events taking place. The complete construction of our versatile spectator stand is manufactured from aluminium. The seating area and the steps are made from special aluminium profiles and are additionally treated to be non-slip. The plastic seat is without backrest.

The stand comes in kit form which can be easily assembled. The robust construction means not only that on-site assembly is quick; it also guarantees that the spectator stand is highly durable.

Standard dimensions of the stands: length: 2.70 m x 3.4 m

Order No. 130000

Grand stand with stairs, without roof top including seat for 25 people, made of aluminium, 2.70 x 3.70 m

Order No. 130010

Grand stand with stairs, with roof top including seat for 25 people, made of aluminium, 2.70 x 3.70 m

Order No. 130020

Grand stand without stairs, without roof top including seat for 30 people, made of aluminium, 2.70 x 3.70 m

Order No. 130030

Grand stand with stairs, with roof top including seat for 25 people, made of aluminium, 2.70 x 3.70 m

Locker Bench "ALUEX"



Order No. 130410

Sturdy aluminium construction in standard length of 2 m. Shapely design of square powder coated aluminium special profile. Shoe rack) made of thick-walled aluminium tube. The Seat Laths, Backrests are manufactured from powder coated aluminium special profile. Available in different colours.

- Double coat hooks
- Legs feature floor protecting plastic endings for levelling
- Size: Length 200 cm or customized length up to 270 cm, Seat Depth 33.6 cm, Seating Height 45 cm, Overall Height (incl. coat rails): 165 cm.

For safety reason we recommend to fix the locker bench to the wall!

Available in different colours.

