



Hockey |



### Outdoor Hockey Goal

The outdoor hockey goal post is made from extra sturdy aluminium profiles. The goal measures a width of 3.66 m and a height of 2.14 m. The top projection measures 0.9 m, whereas the bottom one is 1.2 m. The goal frame is manufactured from an extra sturdy rectangular profile with a cross section of 75x50x6 mm. The profile is specially designed to reduce dents from the ball impact. The front frame is white coated and equipped with our 'INTERLOCK' net hook system. The lower section of the goal post is made from extra strong aluminium boards, which are covered with EPDM. The boards are 46 cm high. The net is fixed free hanging. Therefore the ball cannot hit the support structure of the net, which prevents the ball from bouncing out of the goal. The goal post is further equipped with transport wheels. The total of 4 wheels ensure a comfortable moving of the goals. The goal post complies with the latest FIH rules and regulations.

**Order No. 90080**



### Field Hockey Goal Net

The net is made from high tenacity polypropylene (PP). The net measures a width of 3.66 m and a height of 1.80 m. The projection of the net is 0.90 m on top and 1.20 m on the bottom. The mesh width of the net is 45 mm. The net is available in 3 mm diameter. The net is green in colour.

**Order No. 90010**

The net is made from high tenacity polypropylene (PP). The net measures a width of 3.66 m and a height of 1.80 m. The projection of the net is 0.90 m on top and 1.20 m on the bottom. The mesh width of the net is 25 mm. The net is available in 3 mm diameter. The net is green in colour.

**Order No. 90000**

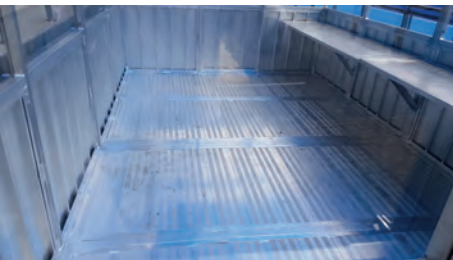
\*Subject to technical alterations



### Hockey Technical Shelter Model "BA"

The technical table Model 'BA' for hockey is made from special aluminium profiles. It measures a length of 4.6 m (90266). The height of the technical table is 2.5 m. The depth measures 3.0 m. The technical table is equipped with a raised floor, which is realized from special aluminium profiles with an anti-slip surface. The interior height is approx. 2.2 m, which allows an upright standing on the inside. The lower section is lined with aluminium. This provides an optimum safety against hockey balls. The top and front is covered with polycarbonate sheets, which makes the item water tight. The technical table is equipped with two sliding doors. The doors are lockable. On the inside it is furnished with a table for the judges.

**Order No. 90266**      Length 4.60m  
**Order No. 90267**      Length 2.30m



\*Subject to technical alterations



**Hockey Technical Shelter Model “BA” ( SPRAY COATED)**

The technical table Model 'BA' for hockey is made from special aluminium profiles and white spray coated .It measures a length of 4.6 m (90266). The height of the technical table is 2.5 m. The depth measures 3.0 m. The technical table is equipped with a raised floor, which is realized from special aluminium profiles with an anti-slip surface. The interior height is approx. 2.2 m, which allows an upright standing on the inside. The lower section is lined with aluminium. This provides an optimum safety against hockey balls. The top and front is covered with polycarbonate sheets, which makes the item watertight. The technical table is equipped with two sliding doors. The doors are lockable. On the inside it is furnished with a table for the judges.

- Order No. 90266/SP:** Length 4.60 m
- Order No. 90267/SP:** Length 2.30 m

\*Subject to technical alterations



### Technical Table Model "SG"

The technical shelter is made from special aluminium profiles. The lower section is lined with aluminium. The top section is covered with see through polycarbonate. On the back side, the shelter on request can covered with coloured polycarbonate sheets. The shelter measures a total height of 2.20 m . Depth 1.90 m. On the inside the shelter is equipped with a writing table. The table are made from aluminium as well. The windows in front and side can closed with roll up. Included two doors left and right side.

**Order No. 90260** Length 4.70 m

**Order No. 90265** Length 2.30 m



\*Subject to technical alterations



**Technical Shelter 2.5 m (ECO VERSION)**

The technical shelter is made from special aluminium profiles. The whole shelter is welded in one piece. The lower section in front and at the side is lined with aluminium. The top front section is covered with see through polycarbonate. On the back side the shelter is covered with coloured polycarbonate sheets. The shelter measures a total height of 250 cm. The roof overhang is around 40 cm. The depth at ground level is 150 cm. It measures a total length of 244 cm. On the inside the shelter is equipped with a writing table.

- Order No. 90280** Length 2.5 m
- Order No. 90285** Length on request



\*Subject to technical alterations



### Mobile Hockey 5s Rebound Board "COMPETITION"

The hockey 5s rebound board competition is made from special aluminium profiles. The boards are equipped with a special foam, which is surrounded by a PVC cover. The rebound boards can be locked with each other easily. They measure a height 25 cm. One set consists of corner pieces and straight pieces. One set is designed to cover a full pitch of 48 x 31.76 m. The front cover is designed in a way to give the required ball return. Therefore, a special foam was chosen to create the ball rebound to keep the game exciting. To enhance the lifetime of this product the foam is covered in weatherproof PVC. The item is designed for competitions of the highest FIH standards.

Order No. 92010/c

The hockey 5s rebound board competition was used in the Youth Olympic Games, Buenos Aires 2018.



\*Subject to technical alterations

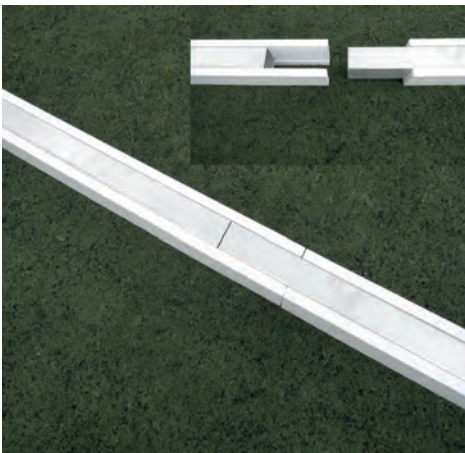




**Outdoor Hockey Barrier**

Outdoor hockey barrier is made from EPDM with an aluminium core. The barrier can be attached to barriers and fences. The board is sloped so that the hockey ball is deflected downwards. The individual boards are connected with internal adapters. The barrier is 21.5 cm high. The top thickness is 8.5 cm. The bottom one is 4.5 cm. The hockey board is available in assorted colours.

**Order No. 92000**



**Indoor Hockey Barrier**

The indoor hockey barrier is made from wood with an aluminium core. The barriers can be locked with each other easily. One set consists of 80 m of barrier.

**Order No. 90240** Set 2.5 m (32 pieces)  
**Order No. 90230** Set 2.0 m (40 pieces)

**Transport Cart for Indoor Hockey Barrier**

The transport cart for indoor hockey barrier is made from aluminium. It is equipped with four wheels, which allow a comfortable manoeuvring. The trolley provides space for a complete set of indoor hockey barrier.

**Order No. 90250**

\*Subject to technical alterations



### Training Hockey Goal Post

The mini soccer goal post is made from special aluminium profiles. Dimension 1800 mm x 400 mm. Projection 450 x 450 mm. it is foldable and easy for storage and transportation. The profiles for the front frame are square hollow with a cross section of 75x50x6 mm (which significantly reduces denting due to ball impacts). The profile is equipped with an integrated net suspension system. The bar frame is made from a 40x40x3 mm square hollow. The goal is available fully welded or dismantle for export.

Order No. 92560



### Padding for Mini Training Hockey Goal Post

The padding is made from weatherproof PVC with a polyurethane core. The padding is designed fit the mini goal exactly. The padding is available in assorted colours.

Order No. 92751

\*Subject to technical alterations



### Hockey Side Board and Back Board

The side boards and back boards are made from special aluminium profiles, which are covered with EPDM. The boards are 46 cm high. The item measures a width of 3.66 m and a depth of 1.2 m. The boards are used for training purpose and can be folded, if not in use.

**Order No. 90255**



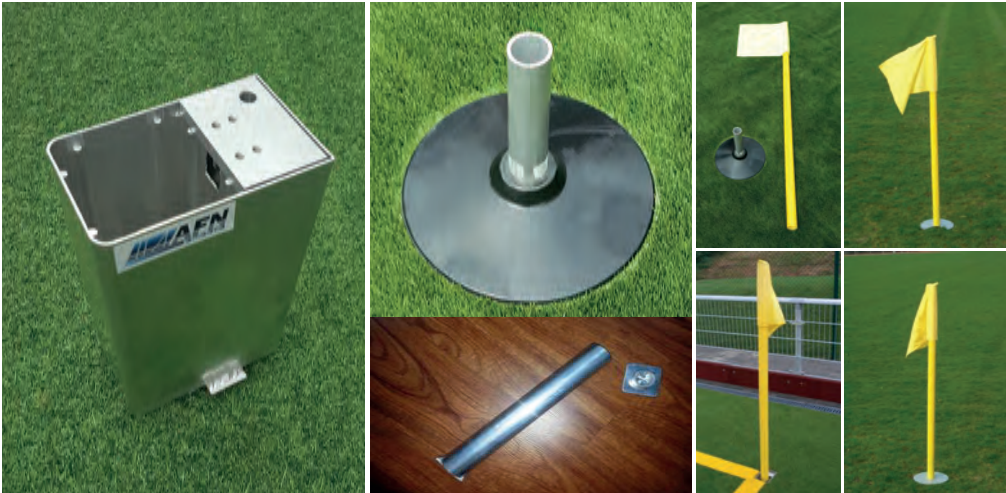
### Protective Nets For Hockey Pitches

The protective nets for hockey pitches is made from knotless PP. The thickness is 4 mm. The mesh width 45 mm. The net contains a lead cord with a weight of 600 gram per meter. The net is available in assorted colours. The bracket for the net (**Order Number 92250**) is made from aluminium.

**Order No. 92200**

Huge problems are experienced on many hockey pitches with extreme damage to the fence and barriers caused by the impact or the hockey ball. The backstop net protects the fencing

\*Subject to technical alterations



## Flag Poles

The hockey flag pole consists of 3 parts: the base, the flag pole and the flag. There are two types of mobile bases: stainless steel (notched corner and round) and solid plastic. The flag pole for mobile bases measures a height of 1.6 m and is realized from a shatterproof non flexible plastic pole with a diameter of 50 mm. There are two types of ground sockets for fixed flag poles: standard and special ground socket. The depth of the ground socket is 20 cm. The socket is made from aluminium. The special ground socket is equipped with coat able cover.

The flag pole for fixed bases measures a height of 1.8 m and is realized from a shatterproof plastic pole with a diameter of 50 mm. There are two type of poles: flexible and non-flexible.

The flag itself measures 40x40 cm. It is available in assorted colours.

### Order No. 90040

#### Mobile Bases

Order No	Material	Shape
90040	Stainless Steel	Corner Notched
90050	Stainless Steel	Round
110500	Plastic	Round

#### Fixed Bases

Order No	Type
110480	Standard Ground Socket with Lid
110490	Special Ground Socket with Coatable Cover

Order No	Type	Colour
110620	Non Flexible	Yellow
110530	Flexible	White

Order No	Colour
110540	Red
110550	White
110560	Yellow
110570	Red White
110580	Blue White
110590	Yellow Orange
110600	Orange



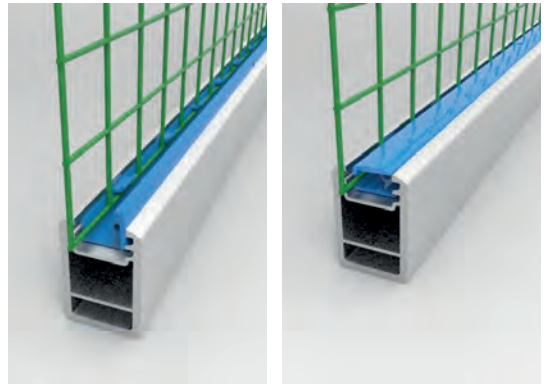
\*Subject to technical alterations

## Flap Down System



The 'flap down' net suspension system is a fully integrated and closed system. This means, all suspension parts are placed inside the goal post profile. The slot for the net suspension is covered to allow a smooth and safe appearance of the goal post.

Therefore, there are no sharp edges or corners at the goal post, which can cause harm to players. The suspension is realized by an aluminium profile, which holds the nets in place. The profile is designed to leave space for the net to be fixed perfectly. The whole system is covered with a flap. The flap is mounted, so it can open and close like a door. The flap can be locked to secure the net in the position. The design is registered of patent in Malaysia and Germany.



**Order No. 90110**

Upgrade to **FLAP DOWN NET HOOK** System for Goal Post competition.

**Order No. 90111**

Upgrade to **FLAP DOWN NET HOOK** System for Goal Post 3.00 x 2.00 m.

\*Subject to technical alterations

## Interlock System



The INTERLOCK net hook system is a fully integrated system. This means all suspensions parts are placed inside the goal post profile. The hooks are placed in a specially designed slot in the goal post profile.

The hooks are placed approx. every 30 cm in the slot to keep the net in place and hang perfectly. The hook is shaped ergonomically and no adjustment has to be done to it. On the horizontal posts the hooks face the direction to lock the net due to gravity. On the vertical posts they are rotated against each other so they lock the movement of the net in both direction. With the INTERLOCK net hook system the of a goal post can be installed within minutes without any usage of tools.



\*Subject to technical alterations