

Best in Sports Equipment



CATALOG

Sports Equipment
2017



About Us..

AFN Sports is one of the biggest manufacturers of sports equipment in South East Asia and also the OEM to various companies in the Europe and Australian market.

We have more than 25 years experience in the industry.

The philosophy of AFN Sports is to produce high quality aluminium sports & athletic products and accessories for the Global market. AFN Sports supplies, delivers, installs and also organize the biggest events.

We are certified by IAAF, German TUV & BWF.

Today, AFN Sports has set its base in Malaysia to take advantage of the economical production costs and at the same time is in a better position to serve the emerging regional market in Asia and around the world.

AFN Sports Sdn Bhd

Lot 10998, Jalan Sungai Jati,
41000 Klang,
Selangor, Malaysia

info@afnsports.com.my
+603 3372 2008
+603 3382 1008

WITH GREAT QUALITY,
GOES A LONG WAY

SYSTEMATIC QUALITY SERVICE

GERMAN QUALITY AND STANDARDS //
RESEARCH & DEVELOPMENT //
PRODUCTION // SYSTEM DESIGN //
QUALITY MANAGEMENT //
SUSTAINABILITY //
CONSULTING AND CUSTOMER
SERVICE // INSTALLATION AND ASSEMBLY //
MAINTENANCE, REPAIRS AND REMOVAL //

QUALITY IS OUR GAME..

Our Certification



Our Services

One Stop Product and
Service Provider :

Fully certified systems
Full systems solutions
Consulting and supervising
during the installation
Provide technical drawings
and installation plans

Quality Equipment

High tech
Professionalism
Expertise
Preciseness
Customization

Our Speciality

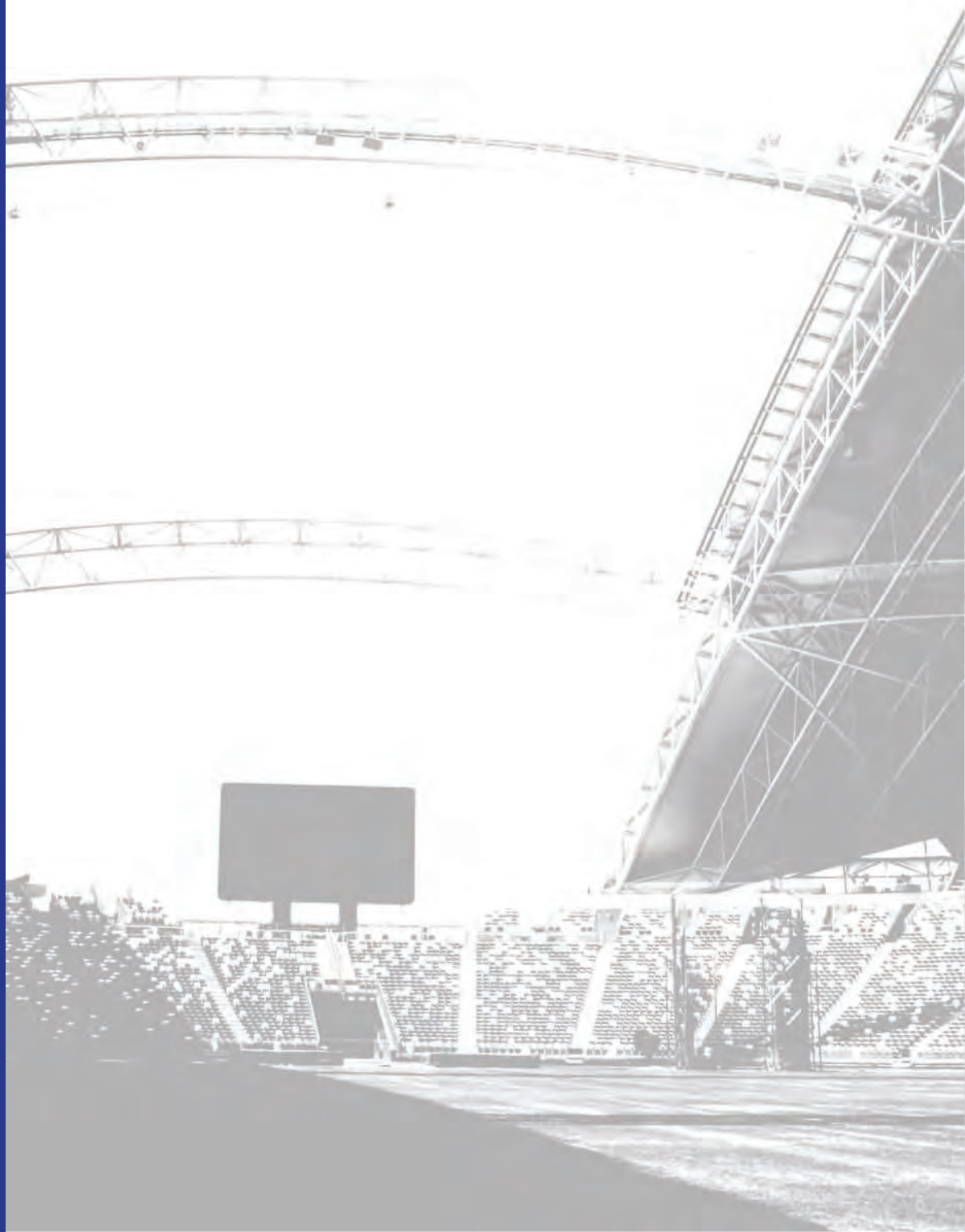
Aluminium
One stop service
More than 25 years
experience
Custom - made products
Support one - site
(local proximity)

Why Aluminium

We use high quality aluminium materials to produce sport equipments.

- High Corrosion Resistance
- Light weight & Durable Safe
- Safety
- Long Life Time
- Low Cost Maintenance

ALUMINIUM



CONTENTS

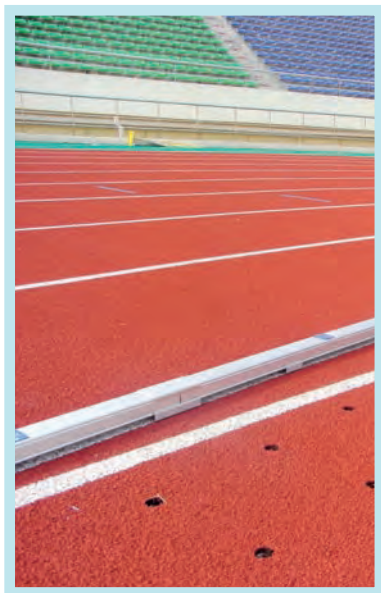
01	Track & Field Equipment
02	High Jump & Pole Vault
03	Hammer, Discus, Shot Put, Javelin
04	Long Jump & Triple Jump
05	Volleyball
06	Badminton
07	Handball
08	Tennis
09	Hockey
10	Basketball
11	Soccer & Rugby
12	Sports Net & Divider Curtain
13	Benches
14	Drainage System
15	Scoreboard
16	Electronic Measurement & Display Equipment
17	Softball & Cricket Equipment
18	Advanced Maintenance Equipment
19	Sports Hall Equipment
20	Combined Rope Track (FUNPLAY)
21	Inflatable Goal Post





ATHLETICS

Track & Field Equipment



Aluminium Curbing

Order No. 11260

The aluminium curbing is made from special made anodized aluminium profiles. It is a mobile marker and separator of the running track. The set measures a total length of 400 m. The curbing is 60 mm wide and 50 mm high. The product is certified by the IAAF.

A standard set consist of

- 34 pcs straight (5 m)
- 46 pcs curved radius 36.5 m (5 m)
- 90 pcs base cover 120 mm
- 90 pcs top cover 120 mm
- 250 pcs base cover with hole 60 mm
- 500 pcs base cover without hole 60 mm
- 250 pcs stainless steel pin 6 mm
- 250 pcs socket for stainless steel pin made from aluminium



On request this is available in shorter cutting lengths or in different radii according to IAAF regulations.



Curbing Socket

Order No. 11320

The curbing socket is made from aluminium. It is sized to match the curbing bolt. The socket is inserted in the ground to receive the curbing bolt.

Curbing Bolt

Order No. 11330

The curbing bolt is made from stainless steel. The curbing bolt is installed at the curbing holder drilled and is fixed inside the curbing socket.

Curbing Holder Drilled

Order No. 11310

The curbing holder drilled is made from a special anodized aluminium profile. This holder fixes the curbing in the ground. It is fixed via the curbing bolt. The curbing holder drilled measures a total length of 60 mm.

Curbing Holder Non Drilled

Order No. 11300

The curbing holder non drilled is made from a special anodized aluminium profile. This holder supports the curbing to stay in place correctly. The curbing holder non drilled measures a total length of 60 mm.

Curbing Connector

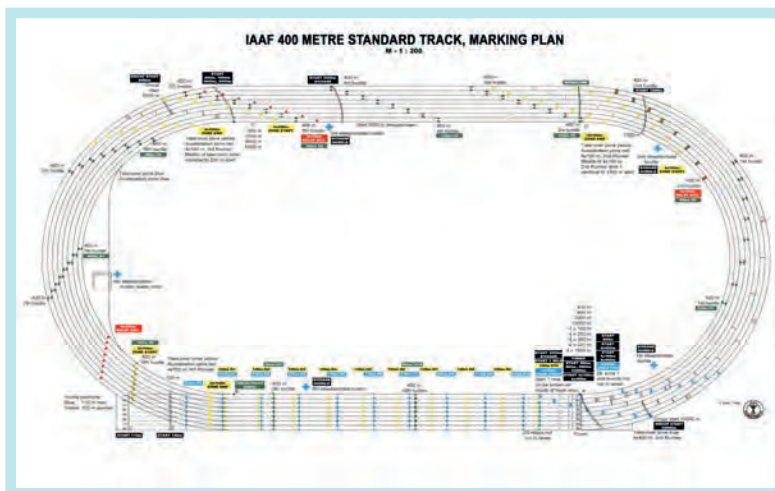
Order No. 11290

The curbing connector is made from a special anodized aluminium profile. The part connects two curbing parts which each other. It also supports the curbing parts at their ends for more stability. The curbing connector measures a total length of 120 mm.

Curbing Cover

Order No. 11280

The curbing cover is made from a special anodized aluminium profile. The part covers the join between two curbing parts.



Endcap for Aluminum Curbing

Order No. 11265

Endcap for aluminium curbing. Made from aluminium. Anodized.



Running Track Signs

Order No. 10790 - (8 lanes)

Running track signs, made from aluminium.

Order No. 10810 - (6 lanes)

Running track signs, made from aluminium.

Order No. 10820 - (9 lanes)

Running track signs, made from aluminium.

The running track signs are made from aluminium. All signs are coloured anodized. The set consists of all required signs for all IAAF certified events.

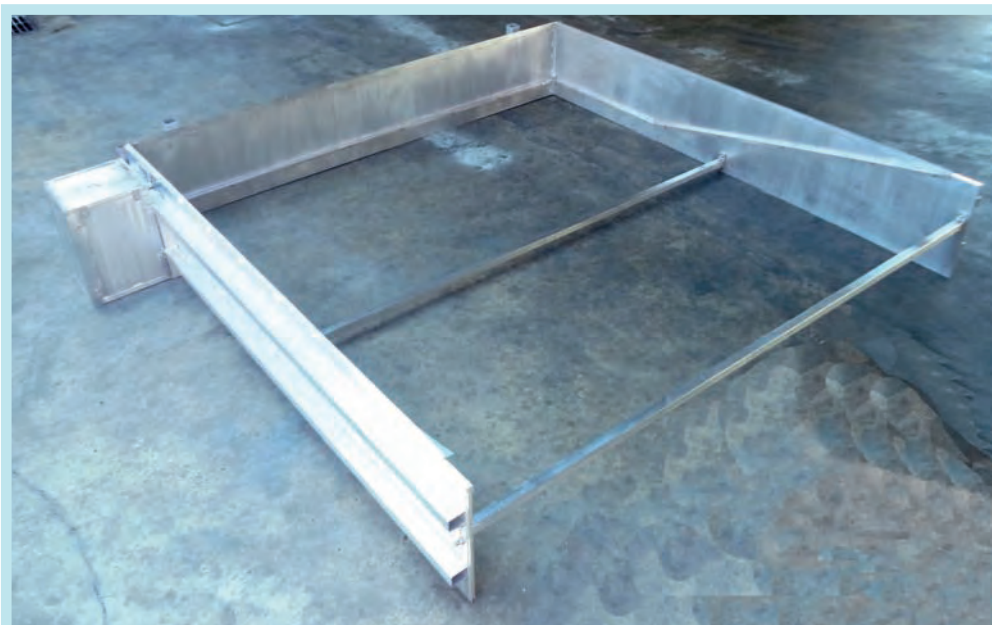


Ramp For Vehicle

Order No. 10260

The ramp for vehicle is made from extra strong aluminium. Each ramp measure a width of 500 mm. The ramp is placed on the aluminium curbing to protect it from crossing vehicles. Therefore vehicles can cross the curbing without detaching it.

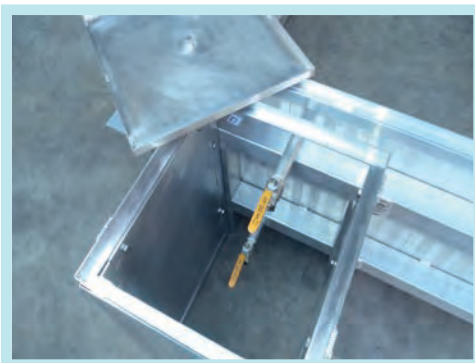




Water Ditch Kit

Order No. 10285

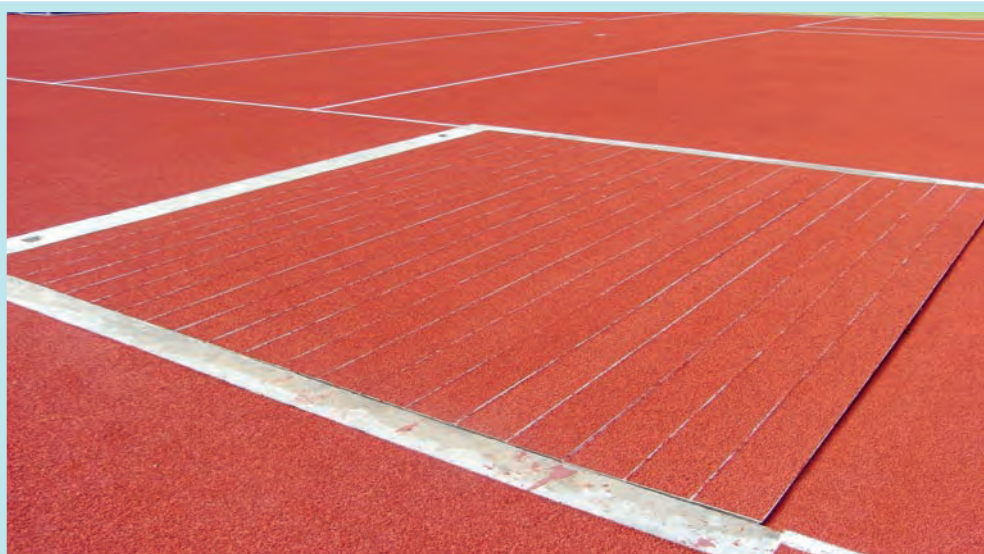
The water ditch kit is made from extra stable aluminium profiles. The water ditch kit consists of several parts. The head piece and side pieces are equipped with angles, which indicates the concrete level at the installation. The angle can be adjusted according to the thickness of the installed flooring system. The two side pieces are also held in place by two cross bars. The crossbars assure that the whole water ditch is aligned correctly. All dimension follow the IAAF regulations.



Water Ditch Supply Shaft

Order No. 10300

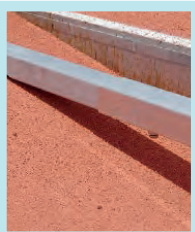
The water ditch supply shaft is made from aluminium. The supply shaft accommodates the two water valves of the water ditch kit. The supply shaft can be dismantled and is fixed together by screws. It is also screwed together with the water ditch kit.



Water Ditch Covering With Rim

Order No. 10270

The water ditch cover with rim is made from heavy duty aluminium profiles. The cover is put on top of the under frame for water ditch cover. The water ditch cover is used to cover the water ditch when not in use. The parts of the cover are connected with tongue and grooves joints. The last piece of the cover is slanted to assure a smooth surface level. The rim allows the item to be covered with the surrounding surface material.



Under Frame For Water Ditch Covering

Order No. 10310

The under frame for water ditch cover is made from aluminium. The under frame supports and puts the water ditch cover in place. It consists of three parts. All parts can be adjusted horizontally and vertically according to the condition on site.



Distribution Shaft

Order No: 10305

The distribution shaft is made from special made aluminium profiles. It measures 600x600x600 mm in size. The top cover can be removed to access the shaft. The cover can be coated with the surrounding surface. The item can be provided in other sizes on request.



Standard Ground Socket For Water Ditch Hurdle

Order No: 10330

The standard ground socket for water ditch hurdle is made from aluminium. The socket is designed to match the square hollow profile 80x80 of the water ditch hurdle. The depth of this socket is 350 mm. The cover for this socket cannot be coated. If ordered together with the water ditch kit, the sockets are welded directly to the kit.



Special Ground Socket For Water Ditch Hurdle

Order No: 10340

The special ground socket for water ditch hurdle is made from aluminium. The socket is designed to match the square hollow profile 80x80 of the water ditch hurdle. The depth of this socket is 350 mm. The cover for this socket can be coated with the surrounding material. If ordered together with the water ditch kit, the sockets are welded directly to the kit.



Water Ditch Hurdle

Order No. 10410

The water ditch hurdle is made from aluminium and a multi layered laminated timber wood crossbar. The water ditch hurdle can be adjusted in height. The heights are 76.2 and 91.4 cm. The crossbar measures a total length of 3.66 m. The crossbar is a square 12.7 cm. The wood is painted with a special paint, which is long lasting even in a strong weather influence.



Steeplechase Hurdle

Order No. 10390

The steeplechase hurdle is made from an aluminium support structure and a wooden bar. This hurdle is used for 3000 m event. The legs are equipped with covered weights, which increase the stability and safety of the product. The hurdle is height adjustable for both male's and female's competition. The heights are 91.4 cm (male) and 76.2 cm (female). The item is available in two lengths of hurdle bar: 5.0 and 3.96 m. The hurdle can be delivered with or without crossbar. The item is certified by the IAAF.

Order No. 10390	3.96 m without crossbar
Order No. 10390/CB	3.96 m with crossbar
Order No. 10390/5 Meter	5.0 m without crossbar
Order No. 10390/5 Meter/CB	5.0 m with crossbar



Trolley For Steeplechase Hurdle

Order No. 10400

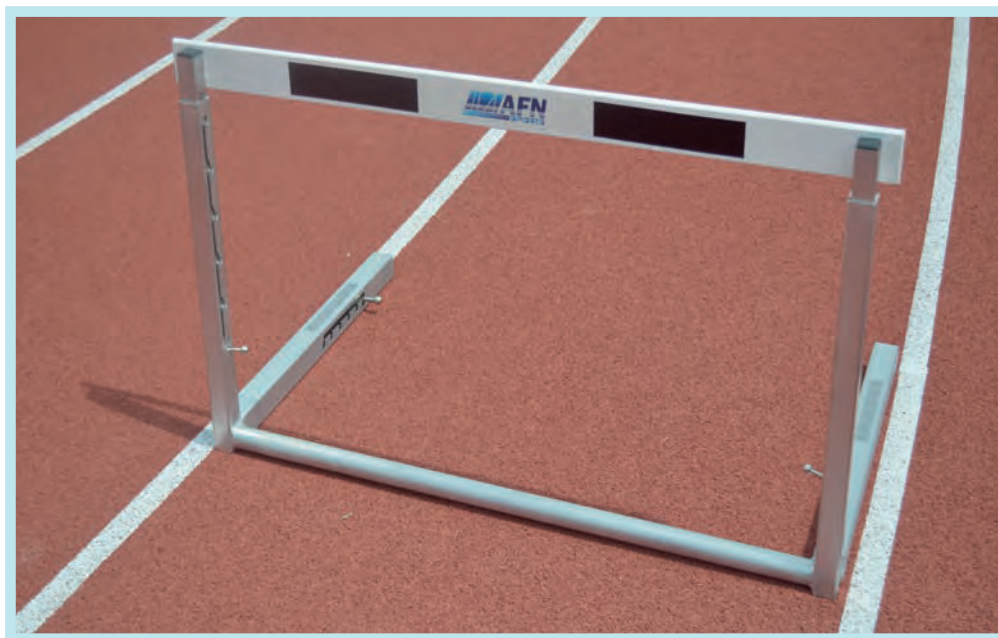
The trolley for steeplechase hurdle is made from a extra strong aluminium profiles. The trolley is used to store and move the steeplechase hurdles. It provides space for one set of hurdles. It is equipped with 200 mm wheels, which allow easy manoeuvring of the trolley on track. The trolley can fit four hurdles.



Transport Cart For Steeplechase Hurdles

Order No. 10401

Transport cart for steeplechase hurdles. Made from aluminium with swivel castors and holder for the hurdle base. (1 Set = 2 Piece). The transport cart for steeplechase hurdles is made from aluminium. It is equipped with four 200 mm castors with swivel. One set consists of two carts. Each hurdle leg can be placed on top of one cart. The cart can accommodate one hurdle at a time.



Hurdle Competition

Order No. 10470

The competition hurdle is made from high grade aluminium profiles. The base profiles measure a cross section of 50x50x3 mm. The vertical profiles measure a cross section of 40x40x3 mm. The profile for the height adjustment is 33 x 33 x 3 mm. The crossbar is made from high quality, durable and extremely flexible wood. The wood is painted with a special paint, which is long lasting even in a strong weather influence.

The height of the hurdle can be adjusted in steps from 0.685 m to 0.762 m to 0.838 m to 0.914 m to 0.991 to 1.067 m. The scale for height adjustment is placed in a groove, so it can't be scratched will adjusting the height. The counterweight has to be adjusted depending on the adjusted hurdle height. The product is certified by the IAAF.



The height of the hurdles can be adjusted to all heights which are used in competition. The special laser cut slot provides an exact adjustment of the height. The measuring of the adjusted height is no longer necessary.

The full fill IAAF regulations of the different heights needs different placement of the weight in the hurdle turning moment. For an easy handling a sticker shows which setup is the correct for the adjusted height.

The sticker for the weight adjustment is places in a special slot of the profile. This was done to prevent the sticker from being scratched or destroyed when the hurdles are stacked.



Competition Hurdle "ECO"

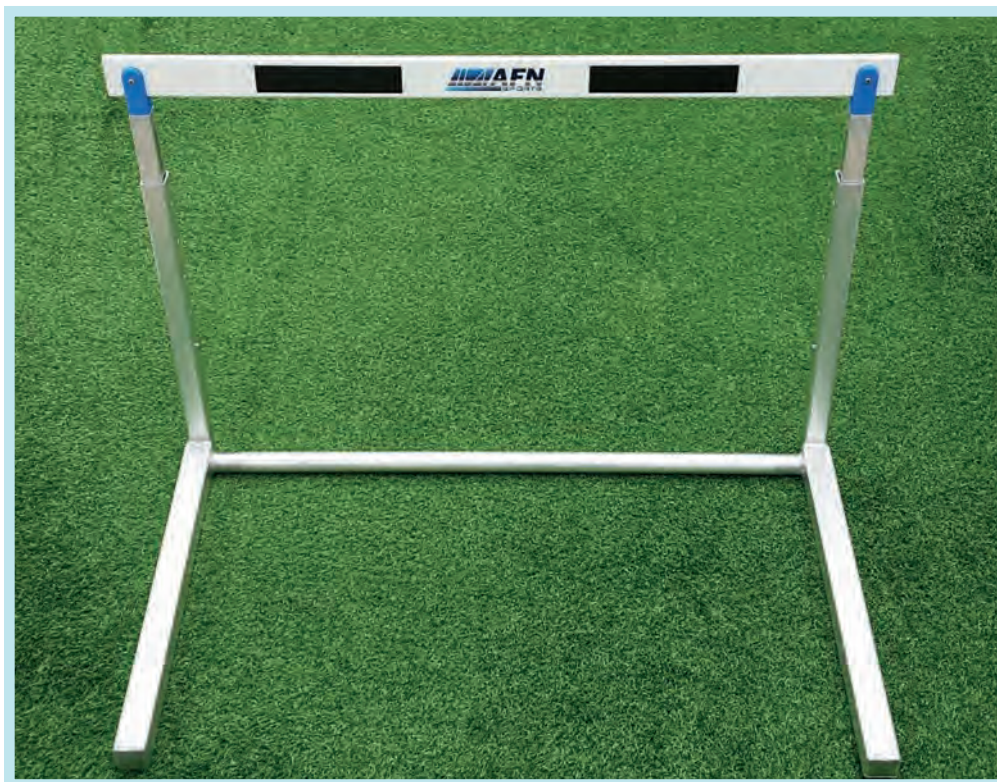
Order No. 10475

The competition hurdle 'ECO' is made from high grade aluminium profiles. The base profiles measure a cross section of 50x50x3 mm. The vertical profiles measure a cross section of 40x40x3 mm. The profile for the height adjustment is 33x33x3 mm. The crossbar is made from high quality, durable and extremely flexible wood. The height of the hurdle can be adjusted in steps from 0.685 m to 0.762 m to 0.838 m to 0.914 m to 0.991 to 1.067 m. The scale for height adjustment is placed in a groove, so it can't be scratched will adjusting the height. The item is certified by the IAAF.



The **weight of this hurdle** can be adjusted with a star knob screw. The screw will lock in the respective position to follow the rules of the IAAF.

The **height of the hurdle** can be adjusted easily with a push button, which locks itself automatically in the correct position.



Training Hurdle

The training hurdle is made from high grade aluminium profiles. The base profiles measure a cross section of 50x50x3 mm. The vertical profiles measure a cross section of 40x40x3 mm. The profile for the height adjustment is 33x33x3 mm. The crossbar is made from high quality, durable and extremely flexible wood. The height adjustment is realized with a simple push button. The training hurdle is available in different sizes.

Order No. 10480

Heights: 66, 71, 76, 84, 91, 100, 106 cm

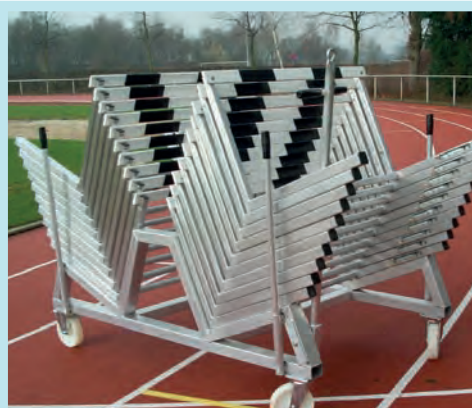
Order No. 10490

Heights: 60, 65, 71, 76, 80 cm

Order No. 10500

Heights: 40, 45, 50, 55, 60 cm

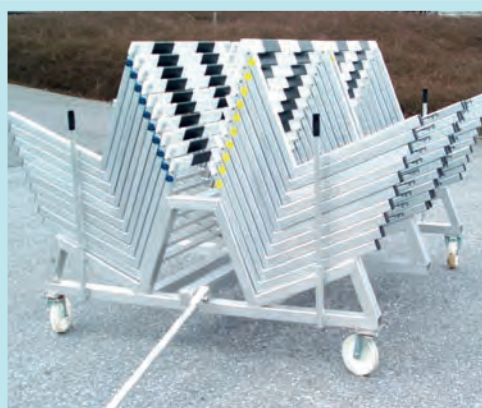




Hurdle Trolley For 20 Hurdles

Order No. 10520

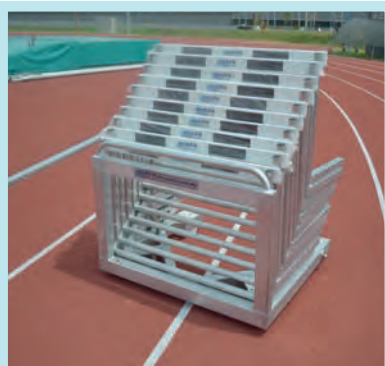
Made from special aluminium profiles. It provides place for up to 20 hurdles. The trolley is easy to be moved and the turning wheels enable to store in any direction. Side loading model.



Hurdle Trolley For 40 Hurdles

Order No. 10530

Made from special aluminium profiles. It provides place for up to 40 hurdles. The trolley is easy to be moved and the turning wheels enable to store in any direction.



Hurdle Trolley For 10 Hurdles

Order No. 10510

Made from special aluminium profiles. It provides place for up to 10 hurdles. The trolley is easy to be moved and the turning wheels enable to store in any direction.



Hurdle Cart For 40 Hurdles

Order No. 10531

The hurdle cart for 40 hurdles is made from aluminium. The cart measures a width of 1.2 m. The length of it is approximately 4.20 m. It provides space for up to 40 hurdles. The hurdles need to be lifted to a height of 60 cm to be put on to the cart. The cart is constructed in a manner that it can be loaded from behind. It is equipped with 200 mm wheels to reduce the load on the running track.



Equipment Trolley

Order No. 10460

The equipment trolley is made from special aluminium profiles. It measures 2x1 m. The trolley is designed to carry loads up to 1 ton. Therefore, it is equipped with special castors. The wall elements can be flapped down on three sides for easy loading and unloading of the equipment.



Judges Stand

Platform for judges, to seat 6, 8, 10 or 12 people, made of aluminium. The basic framework is constructed from aluminium profiles (80 x 60 x 3 mm) with highly rounded edges. The steps consist of aluminium side profiles which are inserted all around into an end section profile. The guard rails can be screwed on so that the platform takes up less space when stored. The wheels, with a diameter of 200 mm, allow the whole platform to be moved easily by one person. The axes for the wheels are inserted in the basic frame and welded all around.

On request our judges stand available in different colors

- 10010:** Stand for 10 people
- 10020:** Stand for 10 people with plastic seat
- 10030:** Stand for 6 people
- 10040:** Stand for 6 people with plastic seat
- 10050:** Stand for 8 people
- 10060:** Stand for 8 people with plastic seat
- 10070:** Stand for 12 people
- 10080:** Stand for 12 people with plastic seat
- 10081:** Stand for 24 people with plastic seat

Bucket seats available in different colours.



Team Winner Podium

Order No. 10241

The winner podium is made from special aluminium profiles. The podium measures a length of 240 cm and a width of 80 cm. The steps for the different places are up to 50 cm high. The item is powder coated. It is available in assorted colours.



Team Winner Podium 'PRO'

Order No. 10251

The Team podium is made from extra strong special aluminium profiles. It is delivered in three parts. Each piece measures a length of 200 cm and a depth of 60 cm. Its heights are 30 cm, 40 cm & 50 cm. The podium is white powder coated. The top surface is covered with EPDM rubber, which provides anti slip properties. The parts are labelled with the respective numbers 1, 2, 3.



Team Winner Podium 'ECO'

Order No. 10250

The team winner podium is made from a sturdy aluminium structure. It provides space for the first three athletes. The position of the athlete are marked on both sides. The position measure different heights. Each position provides space for four athletes. Length : 4.0m



Starter Podium

Order No. 10170

The starter podium without display is made from aluminium. It measures around 80x80 cm and it hexagonal shaped. The top of the stand is equipped with an anti-slip surface.



Starter Podium With Display Powder Coated

Order No. 10181

The exclusive starter podium is made from aluminium. The rostrum measures a total height of 100 cm. The podium is manufactured from a special square hollow profile of 40x3 mm with rounded edges. The base platform is made from a special double hollow profile with an anti-slip surface. The display area is covered with 3 mm thick polycarbonate sheets. Furthermore, it is equipped with two wheels to allow a positioning wherever it is needed. The podium is powder coated and can be purchased in assorted colours.

Starter Podium with Display Aluminium Surface

Order No. 10180

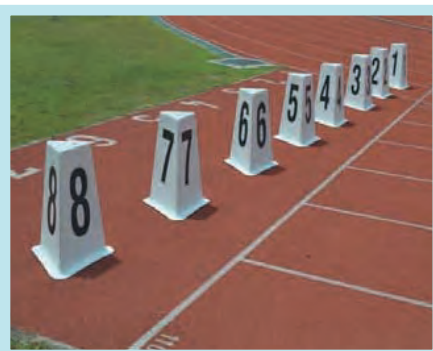
The stadium podium with display is made from aluminium. It measures around 80x80 cm and it hexagonal shaped. The top of the stand is equipped with an anti-slip surface. The item is equipped with a display. For this model the display is not covered with polycarbonate sheets.



Starting Boxes

Order No. 10580

The starting boxes are made from fibreglass reinforced plastic. The boxes also provide space to place indicator for false starts. The boxes are stackable.

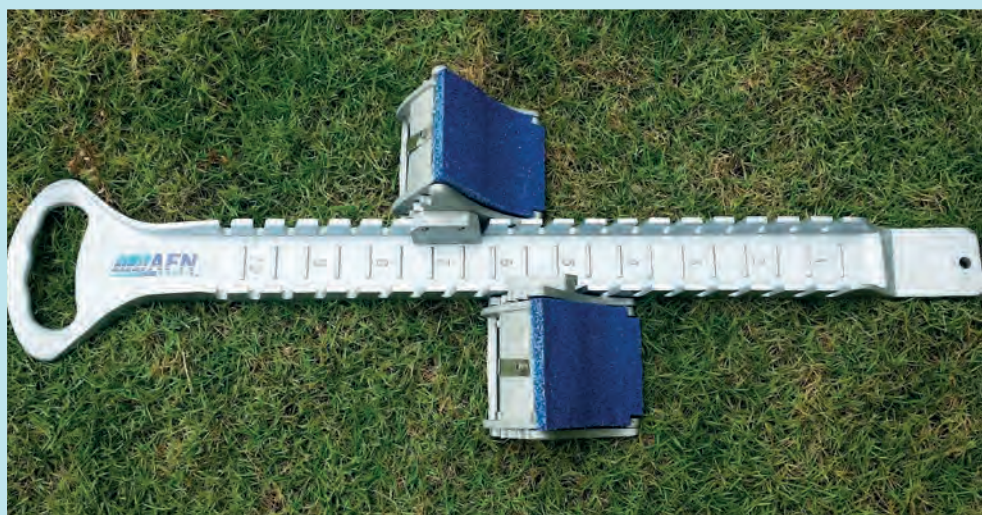


Finishing Post

Order No. 10200

The finishing post is made from aluminium. The posts have a square base frame. They are equipped with a mechanism to hold the finishing line. On request the item can be powder coated.





Starting Block Model 'Olympia'

Order No. 10560

The starting block 'Olympia' is made from aluminium. The parts are casted. It is equipped with a handle. The block is fixed to the ground with spikes. The steps are covered with rubber and are height adjustable. The starting block is certified by the IAAF.



Starting Block Competition

Order No. 10550

The competition starting block is made from aluminium. The parts are extruded. The block is fixed to the ground with spikes. The steps are covered with rubber and are height adjustable. The starting block is certified by the IAAF.



Transport Cart For Starting Blocks

Order No. 10570

The transport trolley for starting block is made from aluminium. It provides space for a number of starting blocks. The trolley is equipped with wheels, which allow an easy handling of the stored starting blocks.



Marker Cones (28 Cm, Synthetic)

The maker cones are made from plastic. Their height is 28 cm. The cones are available in assorted colours.

Order No	Color
11120	Blue
11130	Yellow
11140	Red
11150	Green

Marker Cones (40 Cm, Synthetic)

The maker cones are made from plastic. Their height is 40 cm. The cones are available in assorted colours.

Order No	Color
11170	Blue
11180	Yellow
11190	Red
11200	Green



Relay Rods

Order No. 10780

The relay batons are available in different materials and price categories. The lengths of the batons is 30 cm, The diameter is 40 mm, Each kind of the relay baton is available in assorted colours.

Order No. 10780 Piece

Order No. 10781 SET (1 Set 8 piece)



Lightweight Measuring Wheel

Order No. 11100

The lightweight measuring wheel is a handy precision wheel. It is equipped with a telescopic guide pole and a hinged stand. It is used to measure larger distances of running tracks, cross-country courses and other courses. It can measure up to 9999.9 m. It is possible to measure forward and backward.



Referee Flags

The referee flags are made for referees to signalize their decisions. The flag measures 40 x 40 cm. It is attached to a handle pole. They are available in assorted colours.

Order No	Color
10830	Red
10840	White
10850	Blue
10860	Yellow
10870	Green



Measurement Tapes (Fiberglass)

These measurement tapes are made from fibreglass. The material is tear resistant and waterproof. The width of the tape is 14 mm. The cover and the handle are made from plastics. The tapes are available in different lengths.

Order No	Details
10970	5 m
10980	10 m
10990	15 m
11000	20 m
11010	30 m
11020	50 m
11030	100 m



Runner Up Marker

Order No. 11410

The runner up markers are used to help the athletes to mark their personal starting position for the run up. Therefore they are used in many athletic categories. The markers are available in assorted colours.



Measurement Tapes (Steel)

These measurement tapes are made from steel with a special white coating. The frame and the reel are made metal. The handle is made from impact resistant PVC. The tapes are available in different lengths.

Order No	Details
11040	10 m
11050	20 m
11060	30 m
11070	50 m
11080	50 m, triangular
11090	100 m, triangular



Hand Megaphone

Order No. 11110

Our Hand megaphone is an easy-to-operate, hand grip type megaphone rated at 15 W of output. The newly developed polyimide diaphragm is employed to ensure high sound quality.



Marker Cones, Set of 50

Order No. 11201

Marker Cones, Set of 50 durable and flexible space markers (Ø about 18 cm, height approx. 7 cm) for daily practice. 50 cones in yellow, white, blue, red and green colour on a handy stack and carrying rod.



Sector Marker Tape

Sector Line Marker Tape. PVC tape, 5 cm wide. 25 & 65 m roll.

Order No. 10895

Plastic marking tape for limiting sectors, White Color, 25 meter

Order No. 10896

Plastic marking tape for limiting sectors, Yellow Color, 25 meter

Order No. 10897

Plastic marking tape for limiting sectors, Red Color, 25 meter

Order No. 10900

Plastic marking tape for limiting sectors, White Color, 65 meter

Order No. 10910

Plastic marking tape for limiting sectors, Yellow Color, 65 meter

Order No. 10920

Plastic marking tape for limiting sectors, Red Color, 65 meter

Order No. 10930

Order No. 10940

Fixing brackets for marking tapes





Mobile Display Board

Order No. 10110

The mobile display board is made from high quality aluminium profile. It is equipped with a seat, wheels and a mobile chassis. The mobile chassis provides the space to display the necessary scores. It comes with eight number plates.



Lap Indicator With Bell

Order No. 10160

The lap indicator with bell is made from aluminium. It displays the numbers of laps remaining. For the indication of the last lap the brass bell can be rung.



Wind Control Stand

Order No. 10620

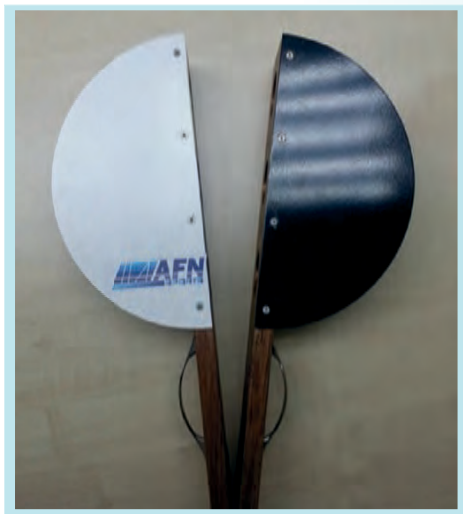
The wind control stand is made from aluminium. It is equipped with a wind sock to display the wind direction. On request the item can be purchased powder coated.



Athletic Bench

Order No. 11220

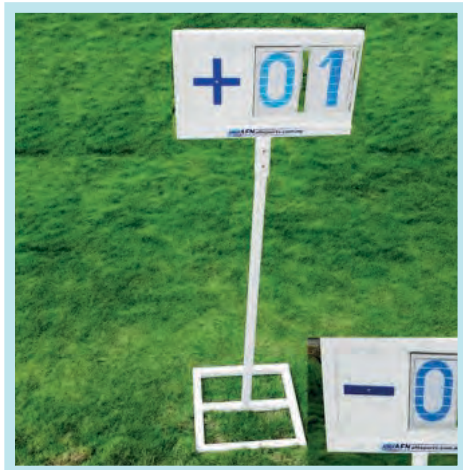
The athletic bench is made from special aluminium profiles. It measures a length of 2.5 m and a height of 2.1 m. The bench provides space for 10 persons. It is equipped with a collapsible roof. For safety reasons the hooks for the cloths are on the back side of the bench. The bench is equipped with a handle and two extra-large nylon wheels, which allows one single person to move the bench to the required location.



Starting Clapper

Order No. 10662

The starting clapper is made from non chipping wood. The design a optical as well as a visual signal.



Manual Wind Speed Display

Order No. 10615

The manual wind speed display is made from stable special aluminium profiles. The item is white and blue powder coated. It displays the wind speed using two digits and the direction with the +/- sign. The two number tables are included in this item.



Running Track Drying Machine“Water Star”

Order No. 11850

Suction Roll WATER STAR. Water absorbing roller. The specially designed, foam covered roller absorbs water and then releases it into a plastic bucket. It operates forwards and backwards, and can be easily used by one person.

Roller width: 80 cm.

Water capacity of bucket: About 17 litres. Weighs (about 50 Kg)



Compact Wind Gauge Kit

Order No. 10611

When an interface with an auto timing system is not required, this is a cost friendly alternative. Compact Wind Gauge meet requirements for IAAF and High School wind gauge rules. Complete kit including tripod and carry case. Of the crank protects fingertips from injury.



Time Control Unit Digital

Order No. 11371

- Digit size: 15 cm. optimal viewing distance 60 metres with a viewing angle of 160°.
- Display of time, date and temperature, counting / countdown, rate of chlorine, rate of humidity. Fix or alternate (manual input for the rate of chlorine and humidity).
- Automatic setting of luminosity according to light exposure (sun, cloud or night).
- Setting of alternation duration (2 to 6 seconds).
- Time display: 12h or 24 h mode. Automatic summer/winter time changeover.
- Temperature display in Celsius (°C) or Fahrenheit (°F) from -99° to +99, 9°.
- Selection °C or °F in the menu. Display resolution: 0, 1°C.
- Accuracy: +0, 5°C from -10 to +85°C.
- Offset adjustment, possible from - 9, 9° to + 9,9°. u Display test menu.
- NTP transmission mode: multicast only