



| Benches



3, 4 & 5 Row Benches

Our multi-use aluminium spectator stand is manufactured in the standard version with three levels of seats 3 metres long. There is ample space for up to 18 persons (6 persons per level). The different levels also guarantee a good view of the events taking place. The complete construction of our versatile spectator stand is manufactured from aluminium. The seating area and the steps are made from special aluminium profiles and are additionally anodised and treated to be non-slip. The stand comes in kit form which can be assembled (3 supporting legs, 3 benches, 2 foot rests and the necessary screws and bolts). The robust construction means not only that on-site assembly is quick, it also guarantees that the spectator stand is highly durable.

Order No. 130035

Transport wheel for Bleacher

Made from Nylon Diameter 200 mm.

Order No. 130070

Aluminium bleacher 4 row length 3m

Order No. 130100

Aluminium bleacher 4 row length 4m

Order No. 130110

Aluminium bleacher 4 row length 5m

Order No. 130120

Aluminium bleacher 4 row length 6m

Order No. 130130

Aluminium bleacher 5 row length 3m

Order No. 130140

Aluminium bleacher 5 row length 4m

Order No. 130150

Aluminium bleacher 5 row length 5m

Order No. 130160

Aluminium bleacher 5 row length 6m

Order No. 130039

Aluminium bleacher 3 row length 2.4 m

Order No. 130040

Aluminium bleacher 3 row length 3 m

Order No. 130050

Aluminium bleacher 3 row length 4m

Order No. 130060

Aluminium bleacher 3 row length 5m





Swedish Bench (ALULINE)

Swedish bench, made by aluminium special profile, 30 cm wide High 30 cm, seat anodised color.

Order No.

130180 : Length 3.00 m

130190 : Length 4.00 m

130170 : Length 5.00 m

130200 : Length 6.00 m



Aluminium Bench (PARIS)

The locker bench is made from special aluminium profiles. All profiles are designed with rounded edges. The seating profile measures an extra-large width of 300 mm. It measures a height of 45 cm. The bench is welded in one piece. It is also equipped with a shoe tray. The item is powder coated. There are assorted colours to choose from. The bench is available in different lengths:

130500: Length 2.00 m

130510: Length 3.00 m

130520: Length 4.00 m

130530: Length 5.00 m

130540: Length 6.00 m

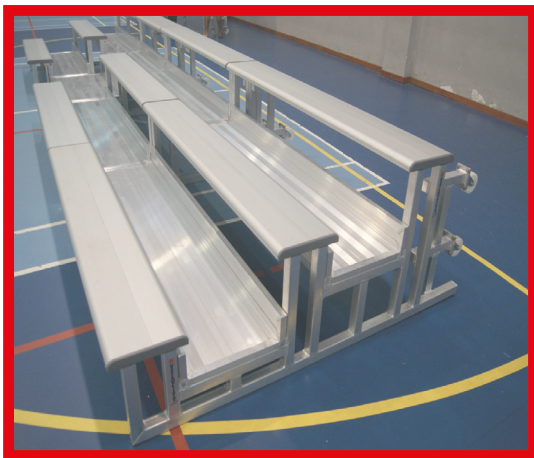
130550: Length on request

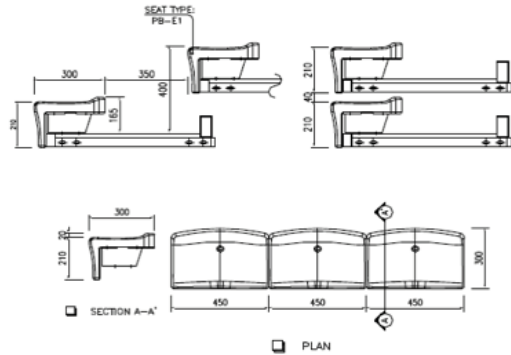


Bleacher MOBILETOP

Order No. 130250

Our "MOBILETOP" bleacher can be used unlimited - in- and outdoors for every kind of activity. Within a short time 50 seats become available! By simple add-on of the sets the seat capacity can be increased. Another advantage is the little storage room. Due to a special moving system the single bleacher parts can be put into each other, so the whole system only requires a storage area of approx. 4 m x 2 m. The seats and walkways are made from special aluminium profiles and are additionally anodised and treated to be non-slip. One complete set consists of 5 blocks of different lengths (one of which is a staircase). Total length 8.75 m. Depth 1.85 m. Height 0.85 m.





Retractable Seating

SPECIFICATION

BENCH SHELL : HIGH DENSITY POLYETHYLENE BLOW-MOLD.

Deck Frame : Steel deck frame is base on platform that will cover loading of spectators. It is composed of front girder (60 x 40x 2.3mmT), rear girder (125 x 75 x 3.2mmT) and intermediate steel connector (60 x 40 2.3mmT), which is strong enough to maximum load of spectators on the platform and space of every intermediate steel connector less than 500mm distance for safety & stable and is welded properly to front & rear girder. Front channel steel sheet (200 x 80 7.5mmT), of first row is for connecting the operation device i.e. Electrical operation units. Deck Frame can be connected parallel direction another one and fixed the Handrails one side. The size of deck frame is 5250mm width and 1800mm (2row) depth follow to type of scales required.

Platform : The deck frame welded firmly shall be covered with 18mm thickness plywood for sound absorption. The platform shall be also finished by carpet with wooden colour or other various colour with section. Manufactures standard size of platform is same as deck frame.

Finish Of Under structure : Main steel parts of under structure, i.e. Deck Frame, Support Column & Braces etc. shall be painted with alkyd primer (1st Coat) and finish urethane paint (2nd coat) for rust and dust free under the cruel environment, such as seaside, swimming pool, etc..

Manual Pulling Unit : Manual pulling unit included for one (1) or two (2) person and two (2) wheels (PVC/rubber Ø 3" x 1¼"T) and shall be connected into the hole on front face or first row. Its dimension will be available to change follow to length of row and height of blocks.



3, 4 & 5 Row Benches VINDICO I with Plastic seat and staircase

Our multi-use aluminium spectator stand is manufactured in the standard version of 5 seats per row and 3 metres long. There is ample space for up to 20 persons for our 4 row bench (5 persons per level). The different levels also guarantee a good view of the events taking place. The complete construction of our versatile spectator stand is manufactured from aluminium. The seating area is supplied with low back rest plastic seat and the steps are made from special aluminium profiles and are additionally anodised and treated to be non-slip. The stand comes in kit form which can be assembled. The robust construction means not only that on-site assembly is quick, it also guarantees that the spectator stand is highly durable.

130800 Aluminium bleacher 3 row length 3 m

130810 Aluminium bleacher 4 row length 3m

130820 Aluminium bleacher 5 row length 3m

130035: Transport wheel for Bleacher,

Made from Nylon Diameter 200 mm

5 Row Benches "Vindico II" with Plastic seat and staircase



Order No. 139000

The five row bench 'Vindico' with plastic seats and staircase is made from a aluminium structure and plastic seats. The bench provides five rows of seating and has a total capacity of 31 seats. The bench measures a length of 3.1 m. The seats are made from UV protected plastic. The stairs are made from a special aluminium profile. The profiles are anodized and have an anti-slip surface. The system is dismantling and can be easily assembled at any site.

130035: Transport wheel for Bleacher. Made from Nylon Diameter 200 mm