

Vol 1. 2018

SPORTS EQUIPMENT CATALOGUE

AFN SPORTS

www.afnsports.com.my



BEST IN SPORTS EQUIPMENT

Sports Equipment Catalogue

Vol 1. - 2018

ABOUT US

AFN Sports is one of the biggest manufacturers of sports equipment in South East Asia and also the OEM to various companies in the Europe and Australian market.

We have more than 25 years experience in the industry.

The philosophy of AFN Sports is to produce high quality aluminium sports & athletic products and accessories for the Global market. AFN Sports supplies, delivers, installs and also organize the biggest events.

We are certified by IAAF, German TUV & BWF.

Today, AFN Sports has set its base in Malaysia to take advantage of the economical production costs and at the same time is in a better position to serve the emerging regional market in Asia and around the world.

AFN Sports Sdn Bhd

Lot 10998, Jalan Sungai Jati,
41000 Klang, Selangor, Malaysia

sales@afnsports.com.my

+603 3372 2008

+603 3382 1008

QUALITY GOES A LONG WAY

SYSTEMATIC

QUALITY

SERVICE

German Quality & Standards
Research & Development
Production | System Design
Quality Management
Sustainability
Consulting & Customer Service
Installation & Assembly
Maintenance, Repairs & Removal

QUALITY IS OUR GAME



Our Services

One Stop Product and Service Provider :

Fully Certified Systems

Full Systems Solutions

Consulting & Supervising during Installation

Provide Technical Drawings and Installation Plans

Quality Equipment

High Tech

Professionalism

Expertise

Preciseness

Customization

Our Speciality

Aluminium

One Stop Service

More than 25 Years Experience

Custom - Made Products

Support On - Site (local proximity)

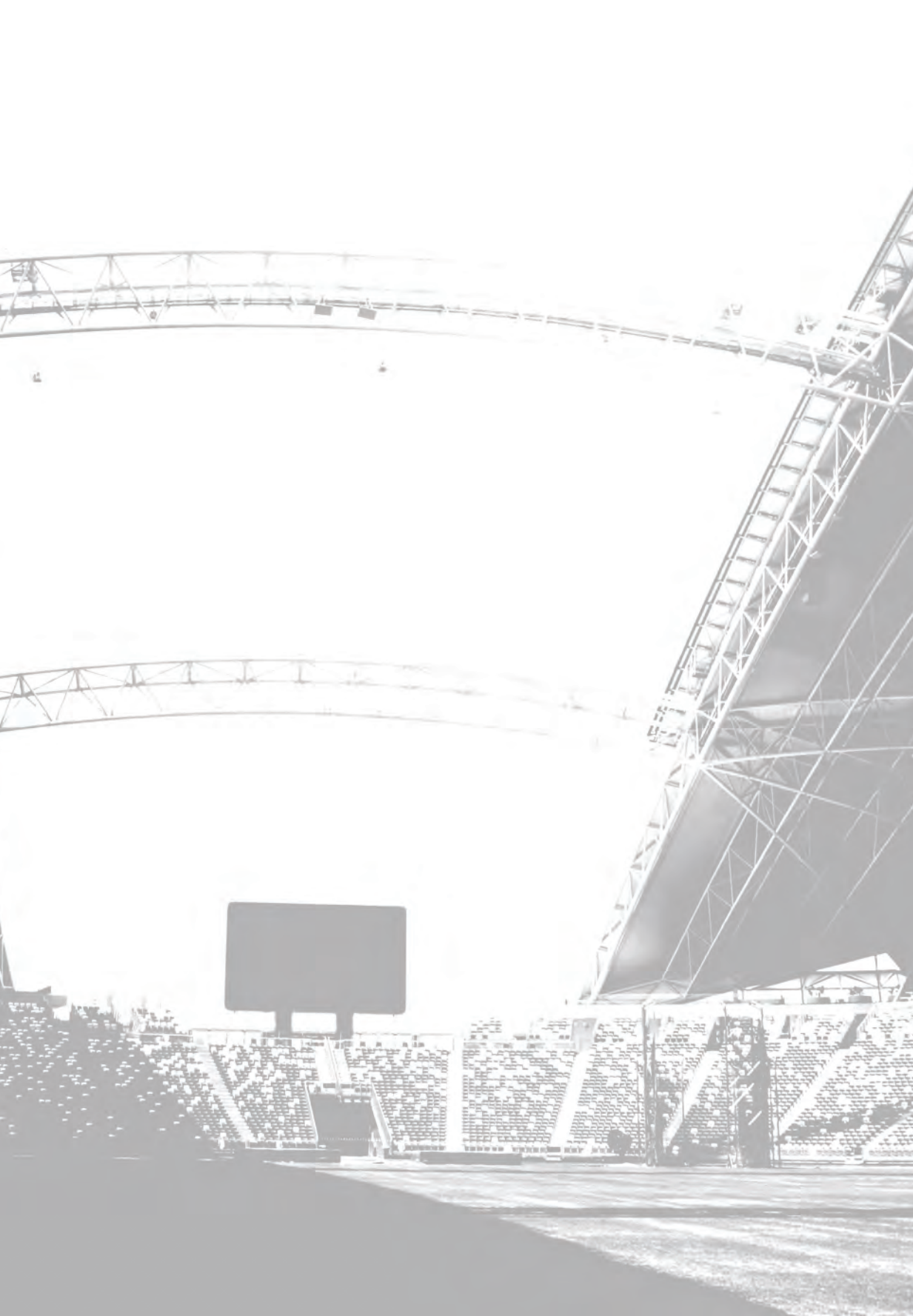
Why Aluminium

We use high quality aluminium materials to produce sport equipments.

- High Corrosion Resistance
- Light weight & Durable Safe
- Safety
- Long Life Time
- Low Cost Maintenance



ALUMINIUM



CONTENTS

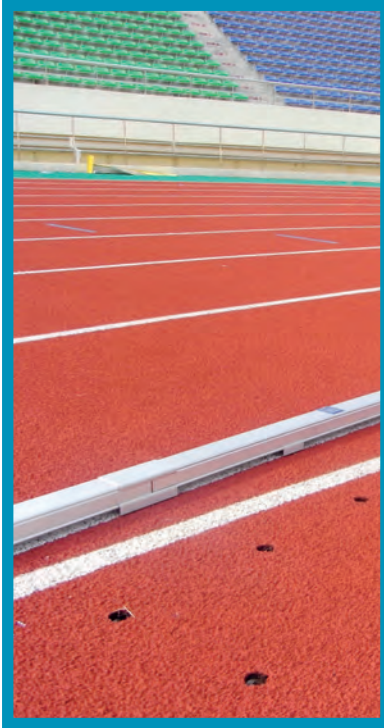
Track & Field Equipment	01
High Jump & Pole Vault	02
Hammer, Discus, Shot Put, Javelin	03
Long Jump & Triple Jump	04
Volleyball	05
Badminton	06
Handball	07
Tennis	08
Hockey	09
Basketball	10
Soccer & Rugby	11
Sports Net & Divider Curtain	12
Benches	13
Drainage System	14
Scoreboard	15
Electronic Measurement & Display Equipment	16
Softball & Cricket Equipment	17
Advanced Maintenance Equipment	18
Sports Hall Equipment	19
Combined Rope Track (FUNPLAY)	20
Martial Arts Mat	21





ATHLETICS

Track & Field Equipment



Aluminium Curbing

The aluminium curbing is made from special made anodized aluminium profiles. It is a mobile marker and separator of the running track. The set measures a total length of 400 m. The curbing is 60 mm wide and 50 mm high.

A standard set consist of :

- 34 pcs Straight (5 m)
- 46 pcs Curved radius 36.5 m (5 m)
- 90 pcs Base cover 120 mm
- 90 pcs Top cover 120 mm
- 250 pcs Base cover with hole 60 mm
- 500 pcs Base cover without hole 60 mm
- 250 pcs Stainless steel pin 6 mm
- 250 pcs Socket for stainless steel pin made from aluminium



On request this is available in shorter cutting lengths or in different radii according to IAAF regulations.

Order No. 11260



Curbing Socket

The curbing socket is made from aluminium. It is sized to match the curbing bolt. The socket is inserted in the ground to receive the curbing bolt.

Order No. 11320

Curbing Bolt

The curbing bolt is made from stainless steel. The curbing bolt is installed at the curbing holder drilled and is fixed inside the curbing socket.

Order No. 11330

Curbing Holder Drilled

The curbing holder drilled is made from a special anodized aluminium profile. This holder fixes the curbing in the ground. It is fixed via the curbing bolt. The curbing holder drilled measures a total length of 60 mm.

Order No. 11310

Curbing Holder Non Drilled

The curbing holder non drilled is made from a special anodized aluminium profile. This holder supports the curbing to stay in place correctly. The curbing holder non drilled measures a total length of 60 mm.

Order No. 11300

Curbing Connector

The curbing connector is made from a special anodized aluminium profile. The part connects two curbing parts which each other. It also supports the curbing parts at their ends for more stability. The curbing connector measures a total length of 120 mm.

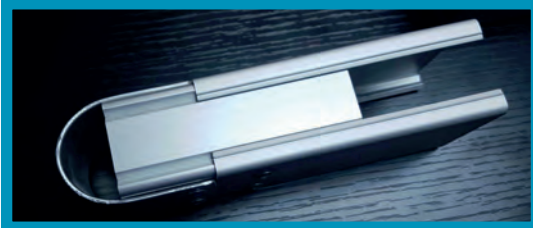
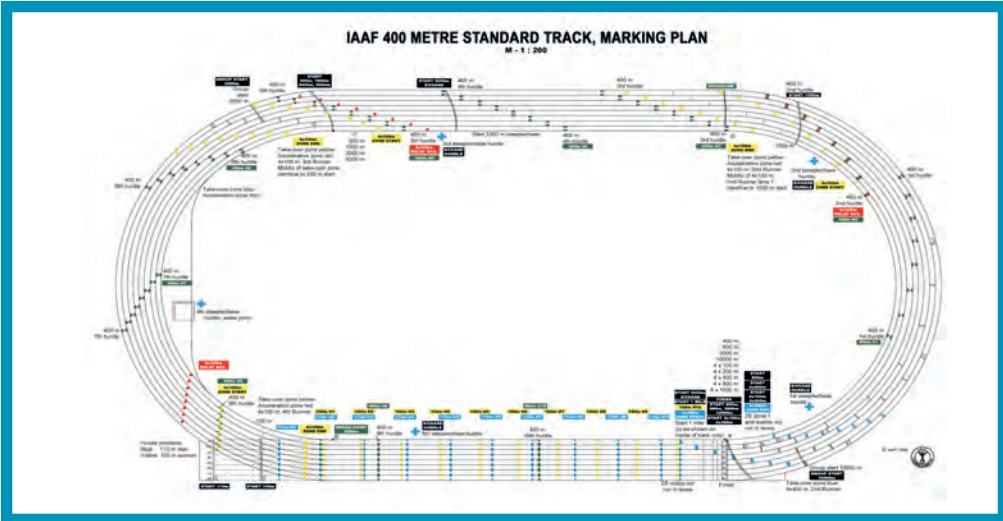
Order No. 11290

Curbing Cover

The curbing cover is made from a special anodized aluminium profile. The part covers the join between two curbing parts.

Order No. 11280

*Subject to technical alterations



Endcap for Aluminum Curbing

Endcap for aluminium curbing. Made from aluminium. Anodized.

Order No. 11265



Running Track Signs

The running track signs are made from aluminium. All signs are coloured anodized. The set consists of all required signs for all IAAF certified events.



Running track signs, made from aluminium.
Order No. 10790 - (8 lanes)

Running track signs, made from aluminium.
Order No. 10810 - (6 lanes)

Running track signs, made from aluminium.
Order No. 10820 - (9 lanes)

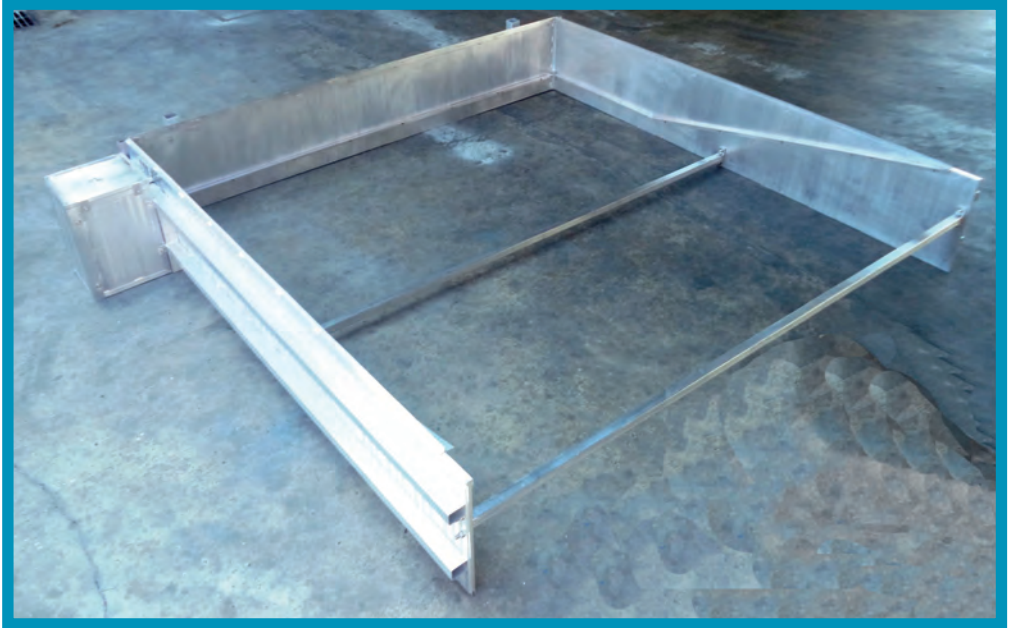


Ramp For Vehicle

The ramp for vehicle is made from extra strong aluminium. Each ramp measure a width of 500 mm. The ramp is placed on the aluminium curbing to protect it from crossing vehicles. Therefore vehicles can cross the curbing without detaching it.

Order No. 10260

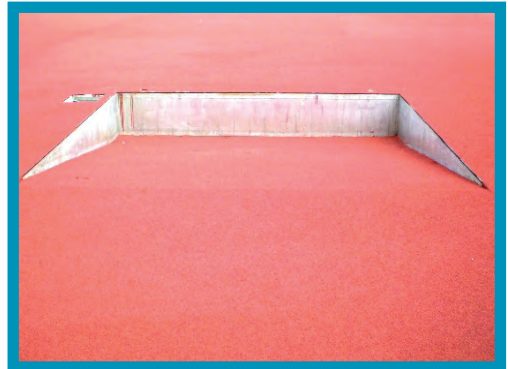
*Subject to technical alterations



Water Ditch Kit

The water ditch kit is made from extra stable aluminium profiles. The water ditch kit consists of several parts. The head piece and side pieces are equipped with angles, which indicates the concrete level at the installation. The angle can be adjusted according to the thickness of the installed flooring system. The two side pieces are also held in place by two cross bars. The crossbars assure that the whole water ditch is aligned correctly. All dimension follow the IAAF regulations.

Order No. 10285



Water Ditch Supply Shaft

The water ditch supply shaft is made from aluminium. The supply shaft accommodates the two water valves of the water ditch kit. The supply shaft can be dismantled and is fixed together by screws. It is also screwed together with the water ditch kit.

Order No. 10300

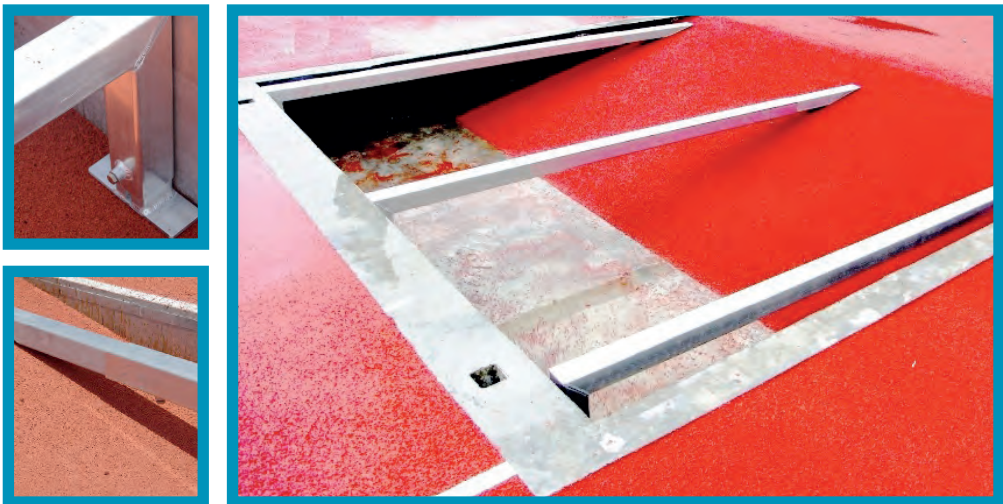
*Subject to technical alterations



Water Ditch Covering With Rim

The water ditch cover with rim is made from heavy duty aluminium profiles. The cover is put on top of the under frame for water ditch cover. The water ditch cover is used to cover the water ditch when not in use. The parts of the cover are connected with tongue and grooves joints. The last piece of the cover is slanted to assure a smooth surface level. The rim allows the item to be covered with the surrounding surface material.

Order No. 10270



Under Frame For Water Ditch Covering

The under frame for water ditch cover is made from aluminium. The under frame supports and puts the water ditch cover in place. It consists of three parts. All parts can be adjusted horizontally and vertically according to the condition on site.

Order No. 10310

*Subject to technical alterations



Water Ditch Hurdle

The water ditch hurdle is made from aluminium and a crossbar. There are two options for crossbars. Option 1 is a multi-layered laminated timber crossbar. Option 2 is a synthetic material one with an integrated aluminium core. The water ditch hurdle can be adjusted in height. The heights are 76.2 and 91.4 cm. The crossbar measures a total length of 3.66 m. The crossbar is a square 12.7 cm. The wood is painted with a special paint, which is long lasting even in a strong weather influence.

Order No 10410 **Wooden Crossbar**
Order No 10410/SY **Synthetic Crossbar**



Standard Ground Socket For Water Ditch Hurdle

The standard ground socket for water ditch hurdle is made from aluminium. The socket is designed to match the square hollow profile 80x80 of the water ditch hurdle. The depth of this socket is 350 mm. The cover for this socket cannot be coated. If ordered together with the water ditch kit, the sockets are welded directly to the kit.

Order No: 10330



Special Ground Socket For Water Ditch Hurdle

The special ground socket for water ditch hurdle is made from aluminium. The socket is designed to match the square hollow profile 80x80 of the water ditch hurdle. The depth of this socket is 350 mm. The cover for this socket can be coated with the surrounding material. If ordered together with the water ditch kit, the sockets are welded directly to the kit.

Order No: 10340

*Subject to technical alterations



Steeplechase Hurdle

The steeplechase hurdle is made from aluminium and a crossbar. There are two options for crossbars. Option 1 is a multi-layered laminated timber crossbar. The wood is painted with a special paint, which is long lasting even in a strong weather influence. Option 2 is a synthetic material one with an integrated aluminium core. The surface is more resistant to the puncture of the spike and will not destroy the structure of the material. The crossbar is a square 12.7 cm. The steeplechase hurdle can be adjusted in height. The heights are 76.2 cm (women) and 91.4 cm (men). The hurdle is available in two different lengths 3.96 m and 5.00 m. It is offered with and without base support. The hurdles measure a weight of approx. 90 kg. The weights are integrated in the legs of the steeplechase hurdle. The hurdle is certified by the IAAF.



With Base Support

Order No	Length	Material
10370	3,96m	Wood
10370/SY	3,96m	Synthetic
10370/SET	3,96m	Wood
10370/SY/SET	3,96m	Synthetic
10370/5M	5,00m	Wood
10370/5M/SY	5,00m	Synthetic

Without Base Support

Order No	Length	Material
10390	3,96m	Wood
10390/SY	3,96m	Synthetic
10390/SET	3,96m	Wood
10390/SY/SET	3,96m	Synthetic
10390/5M	5,00m	Wood
10390/5M/SY	5,00m	Synthetic

*Subject to technical alterations



Trolley For Steeplechase Hurdle

The trolley for steeple chase hurdle is made from extra strong aluminium profiles. The trolley is used for store and moves the steeplechase hurdles. It provided space for one set of hurdles. It is equipped with 200 mm wheels, which allow easy moving of the trolley on track.

Order No. 10400



Transport Cart For Steeplechase Hurdles

Transport cart for steeplechase hurdles. Made from aluminium with swivel castors and holder for the hurdle base. (1 Set = 2 Piece)

Order No. 10401



Distribution Shaft

The distribution shaft is made from special made aluminium profiles. It measures 600x600x600 mm in size. The top cover can be removed to access the shaft. The cover can be coated with the surrounding surface. The item can be provided in other sizes on request.

Order No: 10305

*Subject to technical alterations



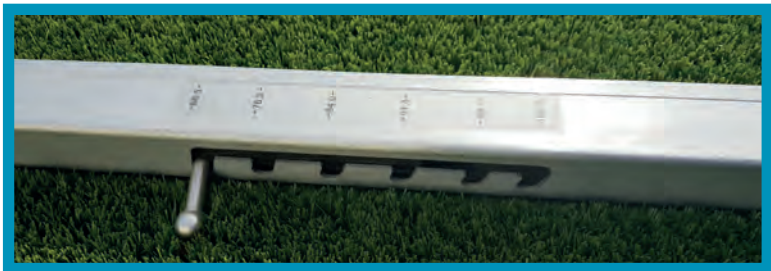
Hurdle Competition

The competition hurdle is made from high grade aluminium profiles. The base profiles measure a cross section of 50x50x3 mm. The vertical profiles measure a cross section of 40x40x3 mm. The profile for the height adjustment is 33 x 33 x 3 mm. The crossbar is made from high quality, durable and extremely flexible wood. The wood is painted with a special paint, which is long lasting even in a strong weather influence.

The height of the hurdle can be adjusted in steps from 0.685 m to 0.762 m to 0.838 m to 0.914 m to 0.991 to 1.067 m. The scale for height adjustment is placed in a groove, so it can't be scratched will adjusting the height. The counterweight has to be adjusted depending on the adjusted hurdle height.



Order No. 10470



The height of the hurdles can be adjusted to all heights which are used in competition. The special laser cut slot provides an exact adjustment of the height. The measuring of the adjusted height is no longer necessary. The full fill IAAF regulations of the different heights needs different placement of the weight in the hurdle turning moment.

For an easy handling a sticker shows which setup is the correct for the adjusted height.

The sticker for the weight adjustment is places in a special slot of the profile. This was done to prevent the sticker from being scratched or destroyed when the hurdles are stacked.

*Subject to technical alterations



Competition Hurdle "ECO"

The competition hurdle 'ECO' is made from high grade aluminium profiles. The base profiles measure a cross section of 50x50x3 mm. The vertical profiles measure a cross section of 40x40x3 mm. The profile for the height adjustment is 33x33x3 mm. The crossbar is made from high quality, durable and extremely flexible wood. The height of the hurdle can be adjusted in steps from 0.685 m to 0.762 m to 0.838 m to 0.914m to 0.991 to 1.067 m. The scale for height adjustment is placed in a groove, so it can't be scratched will adjusting the height.

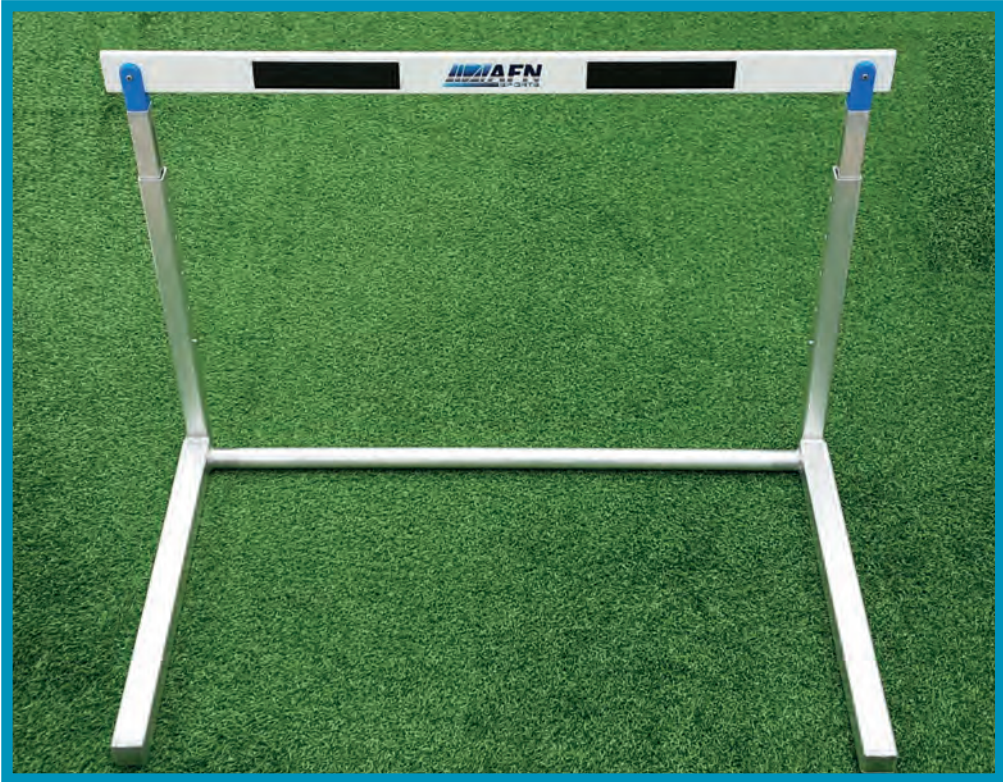


Order No. 10475



The weight of this hurdle can be adjusted with a star knob screw. The screw will lock in the respective position to follow the rules of the IAAF. The height of the hurdle can be adjusted easily with a push button, which locks itself automatically in the correct position.

*Subject to technical alterations



Training Hurdle

The training hurdle is made from high grade aluminium profiles. The base profiles measure a cross section of 50x50x3 mm. The vertical profiles measure a cross section of 40x40x3 mm. The profile for the height adjustment is 33x33x3 mm. The crossbar is made from high quality, durable and extremely flexible wood. The height adjustment is realized with a simple push button. The training hurdle is available in different sizes.

Heights: 66,71,76, 84, 91, 100, 106 cm

Order No. 10480

Heights: 60, 65, 71, 76, 80 cm

Order No. 10490

Heights: 40, 45, 50, 55, 60 cm

Order No. 10500



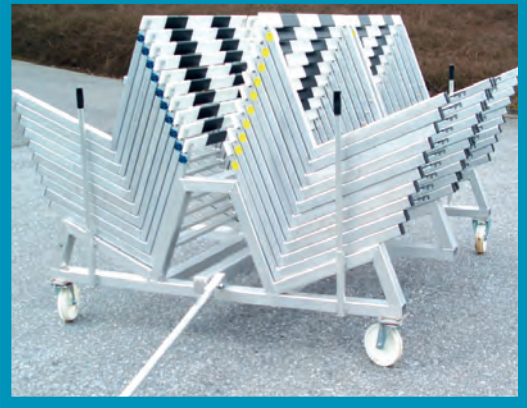
*Subject to technical alterations



Hurdle Trolley For 10 Hurdles

The hurdle trolley is made from aluminium. It is designed to fit 10 hurdles. The trolley allows easy movement and storage for hurdles. The trolley is equipped with four wheels.

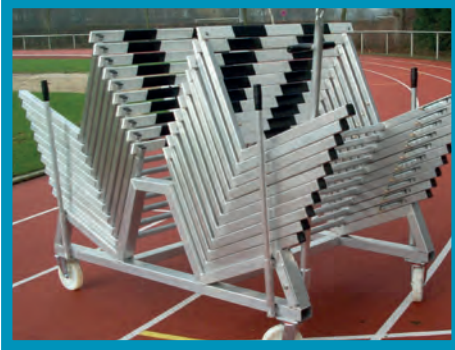
Order No. 10510



Hurdle Trolley For 40 Hurdles

Made from special aluminium profiles. It provides place for up to 40 hurdles. The trolley is easy to be moved and the turning wheels enable to store in any direction.

Order No. 10530



Hurdle Trolley For 20 Hurdles

Made from special aluminium profiles. It provides place for up to 20 hurdles. The trolley is easy to be moved and the turning wheels enable to store in any direction. Side loading model.

Order No. 10520



Hurdle Cart For 40 Hurdles

The hurdle cart for 40 hurdles is made from aluminium. The cart measures a width of 1.2 m. The length of it is approximately 4.20 m. It provides space for up to 40 hurdles. The hurdles need to be lifted to a height of 60 cm to be put on to the cart. The cart is constructed in a manner that it can be loaded from behind. It is equipped with 200 mm wheels to reduce the load on the running track.

Order No. 10531

*Subject to technical alterations



Equipment Trolley

The equipment trolley is made from special aluminium profiles. It measures 2x1 m. The trolley is designed to carry loads up to 1 ton. Therefore, it is equipped with special castors. The wall elements can be flapped down on three sides for easy loading and unloading of the equipment.

Order No. 10640



Judges Stand

Platform for judges, to seat 6, 8, 10 or 12 people, made of aluminium. The basic framework is constructed from aluminium profiles (80 x 60 x 3 mm) with highly rounded edges. The steps consist of aluminium side profiles which are inserted all around into an end section profile. The guard rails can be screwed on so that the platform takes up less space when stored. The wheels, with a diameter of 200 mm, allow the whole platform to be moved easily by one person. The axes for the wheels are inserted in the basic frame and welded all around.

On request our judges stand available in different colors

Order No.

- 10010:** Stand for 10 people
- 10020:** Stand for 10 people with plastic seat
- 10030:** Stand for 6 people
- 10040:** Stand for 6 people with plastic seat
- 10050:** Stand for 8 people
- 10060:** Stand for 8 people with plastic seat
- 10070:** Stand for 12 people
- 10080:** Stand for 12 people with plastic seat
- 10081:** Stand for 24 people with plastic seat

Bucket seats available in different colours.

*Subject to technical alterations



Team Winner Podium

The winner podium is made from special aluminium profiles. The podium measures a length of 240 cm and a width of 80 cm. The steps for the different places are up to 50 cm high. The item is powder coated. It is available in assorted colours.

Order No. 10241



Team Winner Podium 'PRO'

The Team podium is made from extra strong special aluminium profiles. It is delivered in three parts. Each piece measures a length of 200 cm and a depth of 60 cm. Its heights are 30 cm, 40 cm & 50 cm. The podium is white powder coated. The top surface is covered with EPDM rubber, which provides anti slip properties. The parts are labelled with the respective numbers 1, 2, 3.

Order No. 10251



Team Winner Podium 'ECO'

The team winner podium is made from a sturdy aluminium structure. It provides space for the first three athletes. The position of the athlete are marked on both sides. The position measure different heights. Each position provides space for four athletes. Length : 4.0m

Order No. 10250

*Subject to technical alterations



**Starter Podium With Display
Powder Coated**

The exclusive starter podium is made from aluminium. The rostrum measures a total height of 100 cm. The podium is manufactured from a special square hollow profile of 40x3 mm with rounded edges. The base platform is made from a special double hollow profile with an anti-slip surface. The display area is covered with 3 mm thick polycarbonate sheets. Furthermore, it is equipped with two wheels to allow a positioning wherever it is needed. The podium is powder coated and can be purchased in assorted colours.

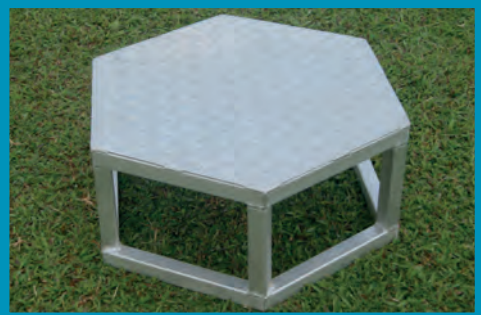
Order No. 10181



**Starter Podium with Display
Aluminium Surface**

The stadium podium with display is made from aluminium. It measures around 80x80 cm and it hexagonal shaped. The top of the stand is equipped with an anti-slip surface. The item is equipped with a display. For this model the display is not covered with polycarbonate sheets.

Order No. 10180



Starter Podium

The starter podium without display is made from aluminium. It measures around 80x80 cm and it hexagonal shaped. The top of the stand is equipped with an anti-slip surface.

Order No. 10170

*Subject to technical alterations



Starting Boxes

The starting boxes are made from fibreglass reinforced plastic. The boxes also provide space to place indicator for false starts. The boxes are stackable.

Order No. 10580

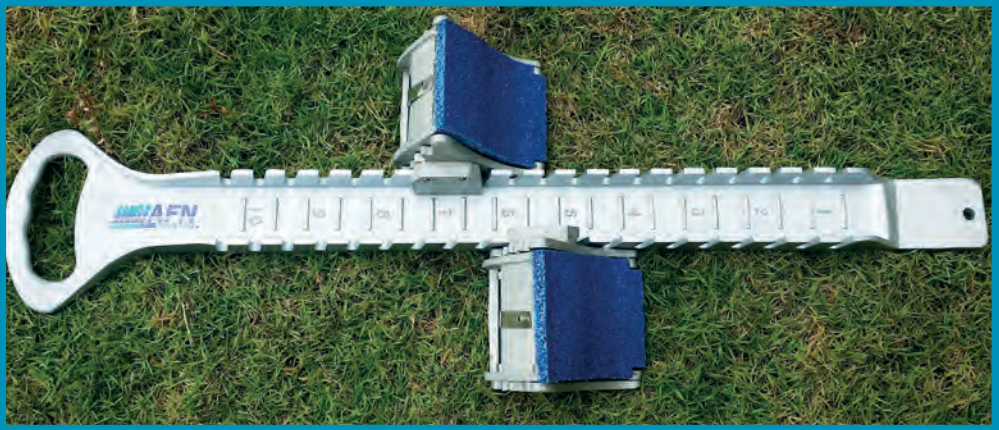


Finishing Post

The finishing post is made from aluminium. The posts have a square base frame. They are equipped with a mechanism to hold the finishing line. On request the item can be powder coated.

Order No. 10200

*Subject to technical alterations

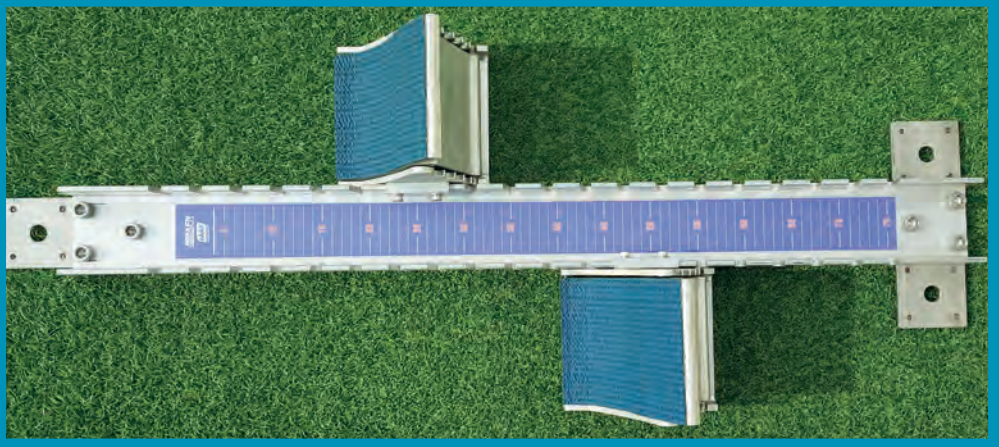


Starting Block Model 'Olympia'

The starting block 'Olympia' is made from aluminium. The parts are casted. It is equipped with a handle. The block is fixed to the ground with spikes. The steps are covered with rubber and are height adjustable.



Order No. 10560



Starting Block Competition

The competition starting block is made from aluminium. The parts are extruded. The block is fixed to the ground with spikes. The steps are covered with rubber and are height adjustable.



Order No. 10550



Transport Cart For Starting Blocks

The transport trolley for starting block is made from aluminium. It provides space for a number of starting blocks. The trolley is equipped with wheels, which allow an easy handling of the stored starting blocks.

Order No. 10570

*Subject to technical alterations



Marker Cones (28 Cm, Synthetic)

The marker cones are made from plastic. Their height is 28 cm. The cones are available in assorted colours.

Order No	Color
11120	Blue
11130	Yellow
11140	Red
11150	Green

Marker Cones (40 Cm, Synthetic)

The marker cones are made from plastic. Their height is 40 cm. The cones are available in assorted colours.

Order No	Color
11170	Blue
11180	Yellow
11190	Red
11200	Green



Relay Rods

The relay batons are available in different materials and price categories. The lengths of the batons is 30 cm. The diameter is 40 mm. Each kind of the relay baton is available in assorted colours.



Order No. 10780 Piece
Order No. 10781 SET (1 Set 8 piece)



Lightweight Measuring Wheel

The lightweight measuring wheel is a handy precision wheel. It is equipped with a telescopic guide pole and a hinged stand. It is used to measure larger distances of running tracks, cross-country courses and other courses. It can measure up to 9999.9 m. It is possible to measure forward and backward.

Order No. 11100

*Subject to technical alterations



Referee Flags

The referee flags are made for referees to signalize their decisions. The flag measures 40 x 40 cm. It is attached to a handle pole. They are available in assorted colours.

Order No	Color
10830	Red
10840	White
10850	Blue
10860	Yellow
10870	Green



Runner Up Marker

The runner up markers are used to help the athletes to mark their personal starting position for the run up. Therefore they are used in many athletic categories. The markers are available in assorted colours.

Order No. 11410



Measurement Tapes (Fiberglass)

These measurement tapes are made from fibreglass. The material is tear resistant and waterproof. The width of the tape is 14 mm. The cover and the handle are made from plastics. The tapes are available in different lengths.

Order No	Details
10970	5m
10980	10m
10990	15m
11000	20m
11010	30m
11020	50m
11030	100m



Measurement Tapes (Steel)

These measurement tapes are made from steel with a special white coating. The frame and the reel are made metal. The handle is made from impact resistant PVC. The tapes are available in different lengths.

Order No	Details
11040	10m
11050	20m
11060	30m
11070	50m
11080	50m, triangular
11090	100m, triangular

*Subject to technical alterations



Hand Megaphone

Our Hand megaphone is an easy-to-operate, hand grip type megaphone rated at 15 W of output. The newly developed polyimide diaphragm is employed to ensure high sound quality.

Order No. 11110



Marker Cones, Set of 50

The marker cones are made from durable plastic. They come in a set of 50 pieces. The cones are stackable and measure a diameter of approximately 18 cm. The height is approximately 7 cm. They come with a carrying rod. The cones are yellow, white blue, red and green.

Order No. 11201



Sector Marker Tape

Sector Line Marker Tape. PVC tape, 5 cm wide. 25 & 65 m roll.

Plastic marking tape for limiting sectors, White Color, 25 meter
Order No. 10895

Plastic marking tape for limiting sectors, Yellow Color, 25 meter
Order No. 10896

Plastic marking tape for limiting sectors, Red Color, 25 meter
Order No. 10897



Plastic marking tape for limiting sectors, White Color, 65 meter
Order No. 10900

Plastic marking tape for limiting sectors, Yellow Color, 65 meter
Order No. 10910

Plastic marking tape for limiting sectors, Red Color, 65 meter
Order No. 10920, Order No. 10930

Fixing brackets for marking tapes
Order No. 10940

*Subject to technical alterations


Mobile Display Board

The mobile display board is made from high quality aluminium profile. It is equipped with a seat, wheels and a mobile chassis. The mobile chassis provides the space to display the necessary scores. It comes with eight number plates.

Order No. 10110


Lap Indicator With Bell

The lap indicator with bell is made from aluminium. It displays the numbers of laps remaining. For the indication of the last lap the brass bell can be rung.

Order No. 10160


Wind Control Stand

The wind control stand is made from aluminium. It is equipped with a wind sock to display the wind direction. On request the item can be purchased powder coated.

Order No. 10620

*Subject to technical alterations



Athletic Bench

The athletic bench is made from special aluminium profiles. It measures a length of 2.5 m and a height of 2.1 m. The bench provides space for 10 persons. It is equipped with a collapsible roof. For safety reasons the hooks for the cloths are on the back side of the bench. The bench is equipped with a handle and two extra-large nylon wheels, which allows one single person to move the bench to the required location.

Order No. 11220

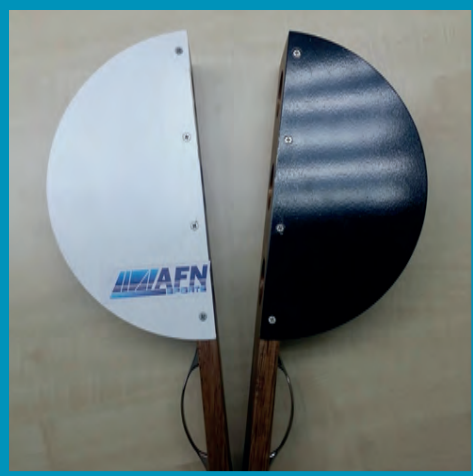
*Subject to technical alterations



Electronic Start Pistol

AFN electronic starting gun. Plug this gun into an amplifier and choose from 3 different tones for starting a race or getting attention: simulated gun sound for athletics, electronic beep as used in swimming and a traditional whistle tone. Also a high visibility LED light can be set to flash in all modes and is visible from 100m. Padded storage case included. Includes cord for attachment to Waist Amplifier (2-555-A), Portable Wireless Amplifier (2-553) or any standard amplifier socket. Note: The electronic gun is powered by 3 x AA batteries (not included). Included AFN loudspeaker 11110 for the best starting sound.

Order No. 10655



Starting Clapper

The starting clapper is made from non chipping wood. The design a optical as well as a visual signal.

Order No. 10662



Manual Wind Speed Display

The manual wind speed display is made from stable special aluminium profiles. The item is white and blue powder coated. It displays the wind speed using two digits and the direction with the +/- sign. The two number tables are included in this item.

Order No. 10615



Running Track Drying Machine "Water Star"

Suction Roll WATER STAR. Water absorbing roller. The specially designed, foam covered roller absorbs water and then releases it into a plastic bucket. It operates forwards and backwards, and can be easily used by one person.

Roller width: 80 cm.

Water capacity of bucket: About 17 litres. Weighs (about 50 Kg)

Order No. 11850



Compact Wind Gauge Kit

When an interface with an auto timing system is not required, this is a cost friendly alternative. Compact Wind Gauge meet requirements for IAAF and High School wind gauge rules. Complete kit including tripod and carry case. Of the crank protects fingertips from injury.

Order No. 10611



Time Control Unit Digital

- Digit size: 15 cm. optimal viewing distance 60 metres with a viewing angle of 160°.
- Display of time, date and temperature, counting / countdown, rate of chlorine, rate of humidity. Fix or alternate (manual input for the rate of chlorine and humidity).
- Automatic setting of luminosity according to light exposure (sun, cloud or night).
- Setting of alternation duration (2 to 6 seconds).
- Time display: 12h or 24 h mode. Automatic summer/winter time changeover.
- Temperature display in Celsius (°C) or Fahrenheit (°F) from 99° to +99, 9°.
- Selection °C or °F in the menu. Display resolution: 0, 1°C. Accuracy: +-0, 5°C from -10 to +85°C.
- Offset adjustment, possible from - 9, 9° to + 9,9°. u Display test menu.
- NTP transmission mode: multicast only.

Order No. 11371

*Subject to technical alterations

