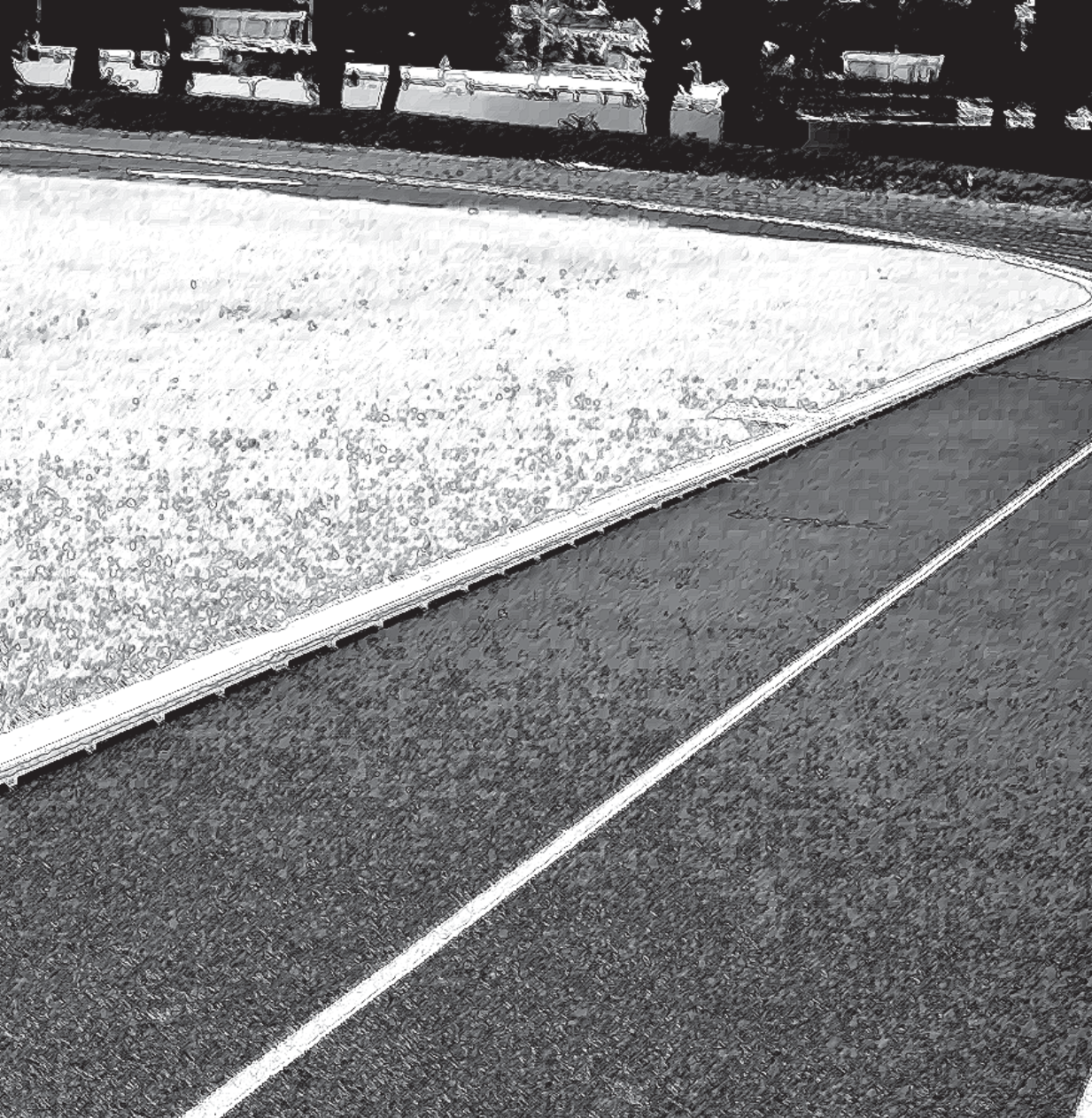




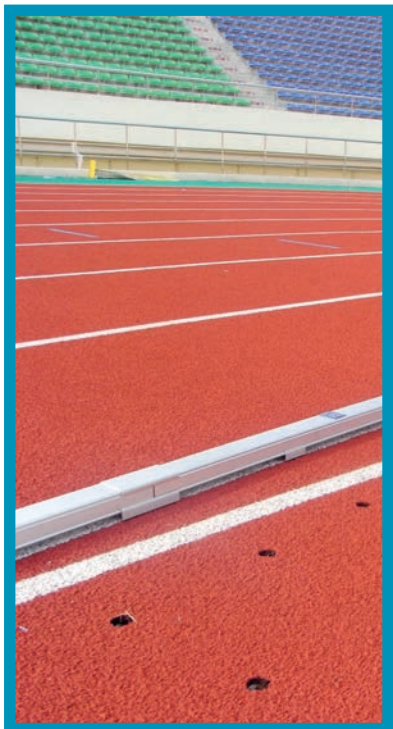
# CONTENTS

<b>Track &amp; Field Equipment</b>	<b>01</b>
<b>High Jump &amp; Pole Vault</b>	<b>02</b>
<b>Hammer, Discus, Shot Put, Javelin</b>	<b>03</b>
<b>Long Jump &amp; Triple Jump</b>	<b>04</b>
<b>Volleyball</b>	<b>05</b>
<b>Badminton</b>	<b>06</b>
<b>Handball</b>	<b>07</b>
<b>Tennis</b>	<b>08</b>
<b>Hockey</b>	<b>09</b>
<b>Basketball</b>	<b>10</b>
<b>Soccer &amp; Rugby</b>	<b>11</b>
<b>Sports Net &amp; Divider Curtain</b>	<b>12</b>
<b>Benches</b>	<b>13</b>
<b>Drainage System</b>	<b>14</b>
<b>Scoreboard</b>	<b>15</b>
<b>Electronic Measurement &amp; Display Equipment</b>	<b>16</b>
<b>Softball &amp; Cricket Equipment</b>	<b>17</b>
<b>Advanced Maintenance Equipment</b>	<b>18</b>
<b>Sports Hall Equipment</b>	<b>19</b>
<b>Combined Rope Track (FUNPLAY)</b>	<b>20</b>
<b>Martial Arts Mat</b>	<b>21</b>





**ATHLETICS**  
Track & Field Equipment



### Aluminium Curbing

The aluminium curbing is made from special made anodized aluminium profiles. It is a mobile marker and separator of the running track. The set measures a total length of 400 m. The curbing is 60 mm wide and 50 mm high.

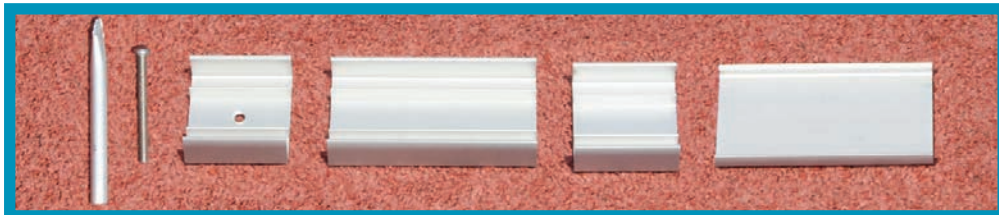
A standard set consist of :

- 34 pcs Straight (5 m)
- 46 pcs Curved radius 36.5 m (5 m)
- 90 pcs Base cover 120 mm
- 90 pcs Top cover 120 mm
- 250 pcs Base cover with hole 60 mm
- 500 pcs Base cover without hole 60 mm
- 250 pcs Stainless steel pin 6 mm
- 250 pcs Socket for stainless steel pin made from aluminium



On request this is available in shorter cutting lengths or in different radii according to IAAF regulations.

**Order No. 11260**



#### Curbing Socket

The curbing socket is made from aluminium. It is sized to match the curbing bolt. The socket is inserted in the ground to receive the curbing bolt.

**Order No. 11320**

#### Curbing Bolt

The curbing bolt is made from stainless steel. The curbing bolt is installed at the curbing holder drilled and is fixed inside the curbing socket.

**Order No. 11330**

#### Curbing Holder Drilled

The curbing holder drilled is made from a special anodized aluminium profile. This holder fixes the curbing in the ground. It is fixed via the curbing bolt. The curbing holder drilled measures a total length of 60 mm.

**Order No. 11310**

#### Curbing Holder Non Drilled

The curbing holder non drilled is made from a special anodized aluminium profile. This holder supports the curbing to stay in place correctly. The curbing holder non drilled measures a total length of 60 mm.

**Order No. 11300**

#### Curbing Connector

The curbing connector is made from a special anodized aluminium profile. The part connects two curbing parts which each other. It also supports the curbing parts at their ends for more stability. The curbing connector measures a total length of 120 mm.

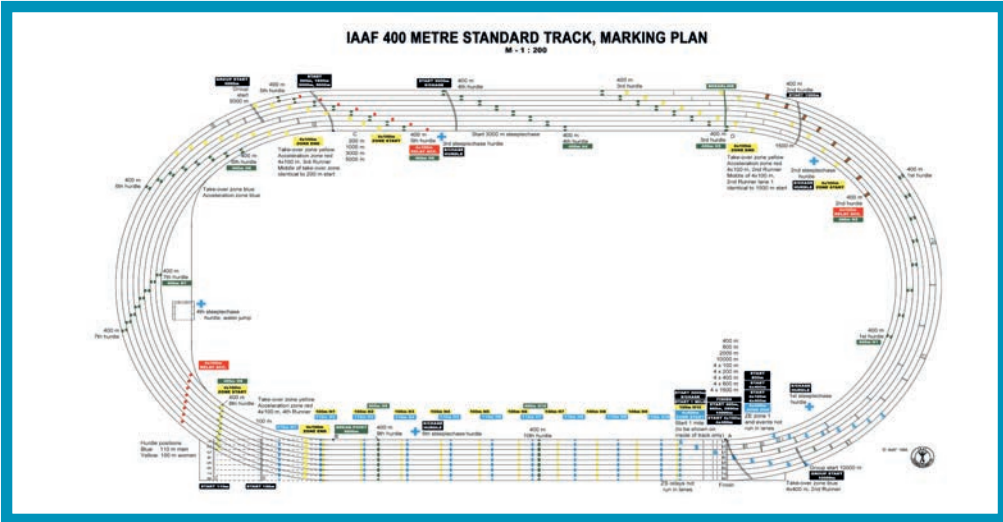
**Order No. 11290**

#### Curbing Cover

The curbing cover is made from a special anodized aluminium profile. The part covers the join between two curbing parts.

**Order No. 11280**

\*Subject to technical alterations



### Endcap for Aluminum Curbing

Endcap for aluminium curbing. Made from aluminium. Anodized.

**Order No. 11265**



### Running Track Signs

The running track signs are made from aluminium. All signs are coloured anodized. The set consists of all required signs for all IAAF certified events.



Running track signs, made from aluminium.  
**Order No. 10790 - (8 lanes)**

Running track signs, made from aluminium.  
**Order No. 10810 - (6 lanes)**

Running track signs, made from aluminium.  
**Order No. 10820 - (9 lanes)**

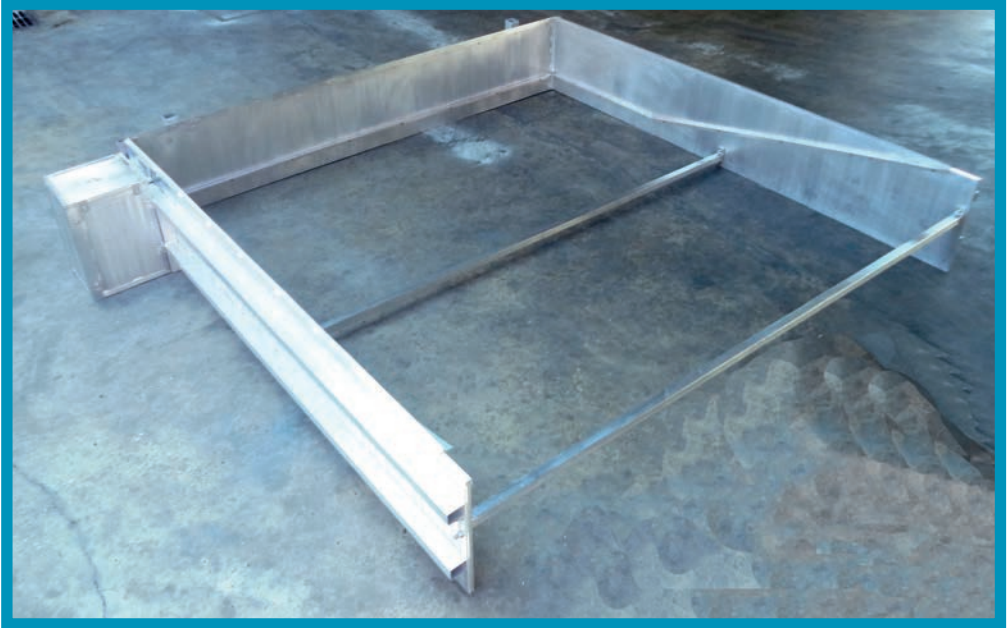


### Ramp For Vehicle

The ramp for vehicle is made from extra strong aluminium. Each ramp measure a width of 500 mm. The ramp is placed on the aluminium curbing to protect it from crossing vehicles. Therefore vehicles can cross the curbing without detaching it.

**Order No. 10260**

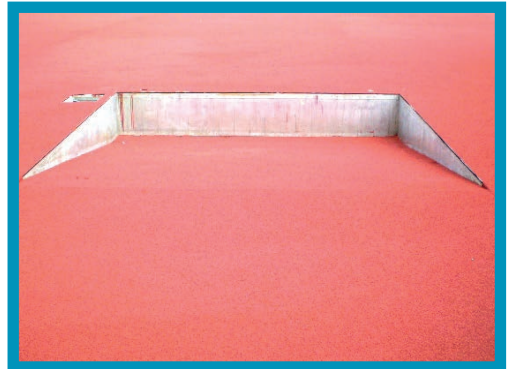
\*Subject to technical alterations



### Water Ditch Kit

The water ditch kit is made from extra stable aluminium profiles. The water ditch kit consists of several parts. The head piece and side pieces are equipped with angles, which indicates the concrete level at the installation. The angle can be adjusted according to the thickness of the installed flooring system. The two side pieces are also held in place by two cross bars. The crossbars assure that the whole water ditch is aligned correctly. All dimension follow the IAAF regulations.

**Order No. 10285**



### Water Ditch Supply Shaft

The water ditch supply shaft is made from aluminium. The supply shaft accommodates the two water valves of the water ditch kit. The supply shaft can be dismantled and is fixed together by screws. It is also screwed together with the water ditch kit.

**Order No. 10300**

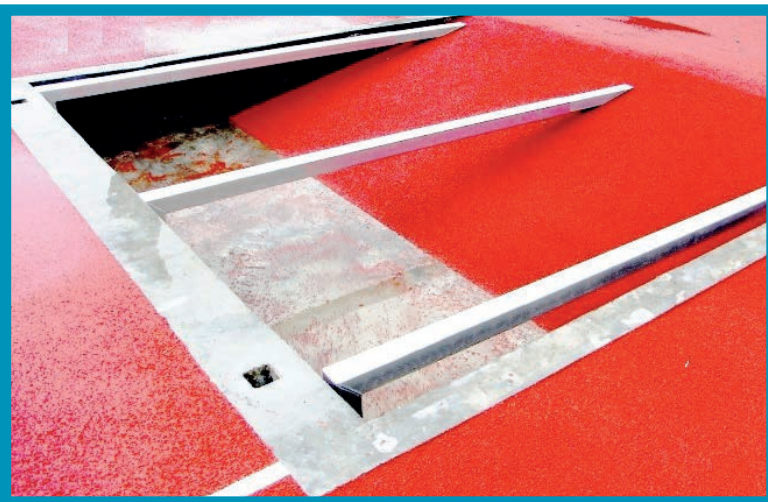
\*Subject to technical alterations



### Water Ditch Covering With Rim

The water ditch cover with rim is made from heavy duty aluminium profiles. The cover is put on top of the under frame for water ditch cover. The water ditch cover is used to cover the water ditch when not in use. The parts of the cover are connected with tongue and grooves joints. The last piece of the cover is slanted to assure a smooth surface level. The rim allows the item to be covered with the surrounding surface material.

**Order No. 10270**



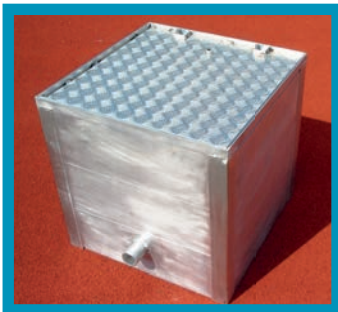
### Under Frame For Water Ditch Covering

The under frame for water ditch cover is made from aluminium. The under frame supports and puts the water ditch cover in place. It consists of three parts. All parts can be adjusted horizontally and vertically according to the condition on site.

**Order No. 10310**

\*Subject to technical alterations





### Distribution Shaft

The distribution shaft is made from special made aluminium profiles. It measures 600x600x600 mm in size. The top cover can be removed to access the shaft. The cover can be coated with the surrounding surface. The item can be provided in other sizes on request.

**Order No: 10305**



### Standard Ground Socket For Water Ditch Hurdle

The standard ground socket for water ditch hurdle is made from aluminium. The socket is designed to match the square hollow profile 80x80 of the water ditch hurdle. The depth of this socket is 350 mm. The cover for this socket cannot be coated. If ordered together with the water ditch kit, the sockets are welded directly to the kit.

**Order No: 10330**



### Special Ground Socket For Water Ditch Hurdle

The special ground socket for water ditch hurdle is made from aluminium. The socket is designed to match the square hollow profile 80x80 of the water ditch hurdle. The depth of this socket is 350 mm. The cover for this socket can be coated with the surrounding material. If ordered together with the water ditch kit, the sockets are welded directly to the kit.

**Order No: 10340**



### Water Ditch Hurdle

The water ditch hurdle is made from aluminium and a crossbar. There are two options for crossbars. Option 1 is a multi-layered laminated timber crossbar. Option 2 is a synthetic material one with an integrated aluminium core. The water ditch hurdle can be adjusted in height. The heights are 76.2 and 91.4 cm. The crossbar measures a total length of 3.66 m. The crossbar is a square 12.7 cm. The wood is painted with a special paint, which is long lasting even in a strong weather influence.



**Order No 10410 Wooden Crossbar**  
**Order No 10410/SY Synthetic Crossbar**



### Steeplechase Hurdle

The steeplechase hurdle is made from an aluminium support structure and a wooden bar. This hurdle is used for 3000 m event. The legs are equipped with covered weights, which increase the stability and safety of the product. The hurdle is height adjustable for both male's and female's competition. The heights are 91.4 cm (male) and 76.2 cm (female). The item is available in two lengths of hurdle bar: 5.0 and 3.96 m. The hurdle can be delivered with or without crossbar.

<b>Order No. 10390</b>	3.96 m without crossbar
<b>Order No. 10390/CB</b>	3.96 m with crossbar
<b>Order No. 10390/5 Meter</b>	5.0 m without crossbar
<b>Order No. 10390/5 Meter/CB</b>	5.0 m with crossbar



### Trolley For Steeplechase Hurdle

The trolley for steeplechase hurdle is made from an extra strong aluminium profiles. The trolley is used to store and move the steeplechase hurdles. It provides space for one set of hurdles. It is equipped with 200 mm wheels, which allow easy manoeuvring of the trolley on track. The trolley can fit four hurdles.

**Order No. 10400**



### Transport Cart For Steeplechase Hurdles

Transport cart for steeplechase hurdles. Made from aluminium with swivel castors and holder for the hurdle base. (1 Set = 2 Piece). The transport cart for steeplechase hurdles is made from aluminium. It is equipped with four 200 mm castors with swivel. One set consists of two carts. Each hurdle leg can be placed on top of one cart. The cart can accommodate one hurdle at a time.

**Order No. 10401**



### Hurdle Competition

The competition hurdle is made from high grade aluminium profiles. The base profiles measure a cross section of 50x50x3 mm. The vertical profiles measure a cross section of 40x40x3 mm. The profile for the height adjustment is 33 x 33 x 3 mm. The crossbar is made from high quality, durable and extremely flexible wood. The wood is painted with a special paint, which is long lasting even in a strong weather influence.

The height of the hurdle can be adjusted in steps from 0.685 m to 0.762 m to 0.838 m to 0.914 m to 0.991 to 1.067 m. The scale for height adjustment is placed in a groove, so it can't be scratched will adjusting the height. The counterweight has to be adjusted depending on the adjusted hurdle height.



**Order No. 10470**



The height of the hurdles can be adjusted to all heights which are used in competition. The special laser cut slot provides an exact adjustment of the height. The measuring of the adjusted height is no longer necessary. The full fill IAAF regulations of the different heights needs different placement of the weight in the hurdle turning moment.

For an easy handling a sticker shows which setup is the correct for the adjusted height.

The sticker for the weight adjustment is places in a special slot of the profile. This was done to prevent the sticker from being scratched or destroyed when the hurdles are stacked.

\*Subject to technical alterations



### Competition Hurdle "ECO"

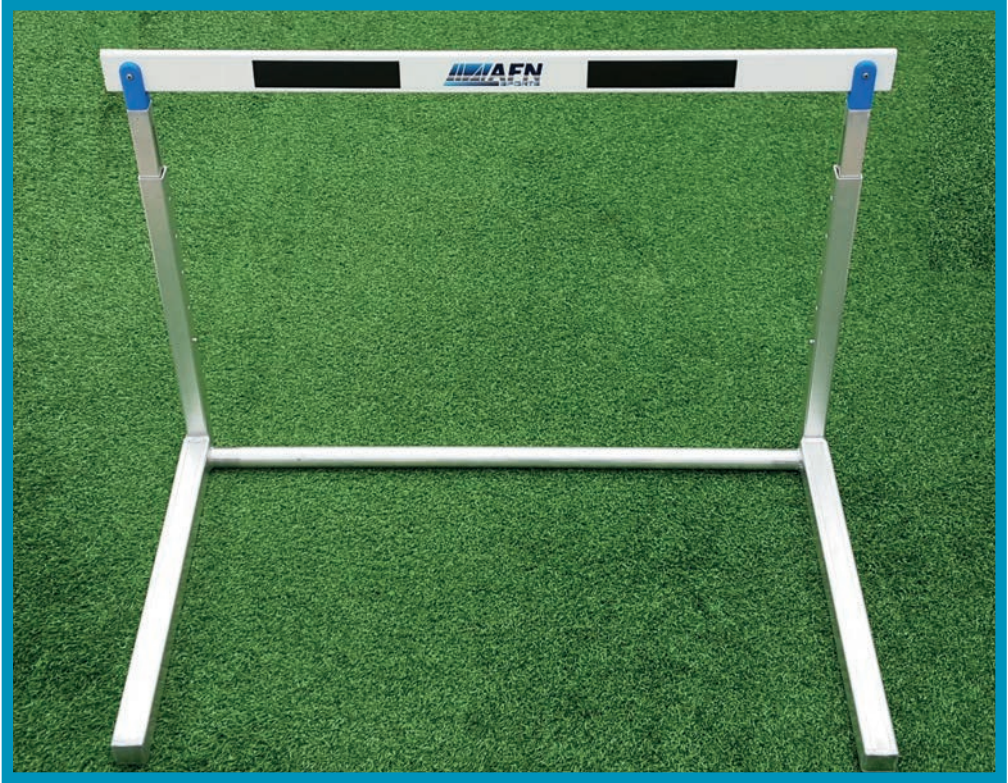
The competition hurdle 'ECO' is made from high grade aluminium profiles. The base profiles measure a cross section of 50x50x3 mm. The vertical profiles measure a cross section of 40x40x3 mm. The profile for the height adjustment is 33x33x3 mm. The crossbar is made from high quality, durable and extremely flexible wood. The height of the hurdle can be adjusted in steps from 0.685 m to 0.762 m to 0.838 m to 0.914m to 0.991 to 1.067 m. The scale for height adjustment is placed in a groove, so it can't be scratched will adjusting the height.



Order No. 10475



The weight of this hurdle can be adjusted with a star knob screw. The screw will lock in the respective position to follow the rules of the IAAF. The height of the hurdle can be adjusted easily with a push button, which locks itself automatically in the correct position.



### Training Hurdle

The training hurdle is made from high grade aluminium profiles. The base profiles measure a cross section of 50x50x3 mm. The vertical profiles measure a cross section of 40x40x3 mm. The profile for the height adjustment is 33x33x3 mm. The crossbar is made from high quality, durable and extremely flexible wood. The height adjustment is realized with a simple push button. The training hurdle is available in different sizes.

Heights: 66, 71, 76, 84, 91, 100, 106 cm

**Order No. 10480**

Heights: 60, 65, 71, 76, 80 cm

**Order No. 10490**

Heights: 40, 45, 50, 55, 60 cm

**Order No. 10500**



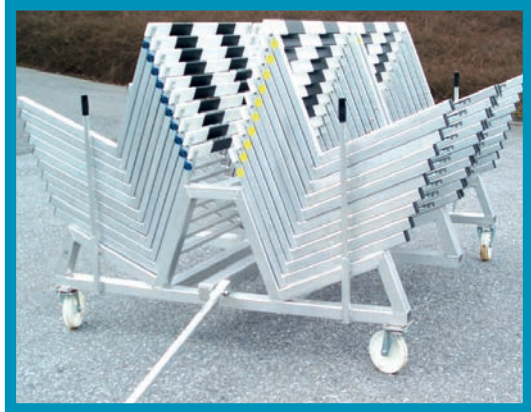
\*Subject to technical alterations



### Hurdle Trolley For 10 Hurdles

The hurdle trolley is made from aluminium. It is designed to fit 10 hurdles. The trolley allows easy movement and storage for hurdles. The trolley is equipped with four wheels.

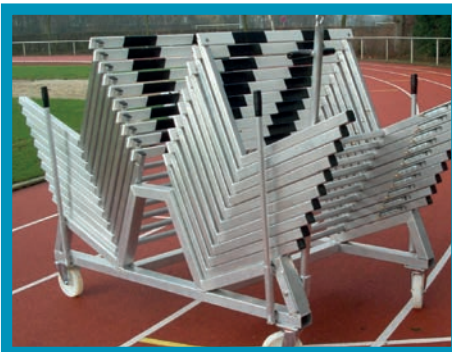
**Order No. 10510**



### Hurdle Trolley For 40 Hurdles

Made from special aluminium profiles. It provides place for up to 40 hurdles. The trolley is easy to be moved and the turning wheels enable to store in any direction.

**Order No. 10530**



### Hurdle Trolley For 20 Hurdles

Made from special aluminium profiles. It provides place for up to 20 hurdles. The trolley is easy to be moved and the turning wheels enable to store in any direction. Side loading model.

**Order No. 10520**



### Hurdle Cart For 40 Hurdles

The hurdle cart for 40 hurdles is made from aluminium. The cart measures a width of 1.2 m. The length of it is approximately 4.20 m. It provides space for up to 40 hurdles. The hurdles need to be lifted to a height of 60 cm to be put on to the cart. The cart is constructed in a manner that it can be loaded from behind. It is equipped with 200 mm wheels to reduce the load on the running track.

**Order No. 10531**

\*Subject to technical alterations



### Equipment Trolley

The equipment trolley is made from special aluminium profiles. It measures 2x1 m. The trolley is designed to carry loads up to 1 ton. Therefore, it is equipped with special castors. The wall elements can be flapped down on three sides for easy loading and unloading of the equipment.

**Order No. 10640**



### Judges Stand

Platform for judges, to seat 6, 8, 10 or 12 people, made of aluminium. The basic framework is constructed from aluminium profiles (80 x 60 x 3 mm) with highly rounded edges. The steps consist of aluminium side profiles which are inserted all around into an end section profile. The guard rails can be screwed on so that the platform takes up less space when stored. The wheels, with a diameter of 200 mm, allow the whole platform to be moved easily by one person. The axes for the wheels are inserted in the basic frame and welded all around.

On request our judges stand available in different colors

**Order No.**

- 10010:** Stand for 10 people
- 10020:** Stand for 10 people with plastic seat
- 10030:** Stand for 6 people
- 10040:** Stand for 6 people with plastic seat
- 10050:** Stand for 8 people
- 10060:** Stand for 8 people with plastic seat
- 10070:** Stand for 12 people
- 10080:** Stand for 12 people with plastic seat
- 10081:** Stand for 24 people with plastic seat

Bucket seats available in different colours.

\*Subject to technical alterations



### Team Winner Podium

The winner podium is made from special aluminium profiles. The podium measures a length of 240 cm and a width of 80 cm. The steps for the different places are up to 50 cm high. The item is powder coated. It is available in assorted colours.

**Order No. 10241**



### Team Winner Podium 'PRO'

The Team podium is made from extra strong special aluminium profiles. It is delivered in three parts. Each piece measures a length of 200 cm and a depth of 60 cm. Its heights are 30 cm, 40 cm & 50 cm. The podium is white powder coated. The top surface is covered with EPDM rubber, which provides anti slip properties. The parts are labelled with the respective numbers 1, 2, 3.

**Order No. 10251**



### Team Winner Podium 'ECO'

The team winner podium is made from a sturdy aluminium structure. It provides space for the first three athletes. The position of the athlete are marked on both sides. The position measure different heights. Each position provides space for four athletes. Length : 4.0m

**Order No. 10250**

\*Subject to technical alterations





**Starter Podium With Display  
Powder Coated**

The exclusive starter podium is made from aluminium. The rostrum measures a total height of 100 cm. The podium is manufactured from a special square hollow profile of 40x3 mm with rounded edges. The base platform is made from a special double hollow profile with an anti-slip surface. The display area is covered with 3 mm thick polycarbonate sheets. Furthermore, it is equipped with two wheels to allow a positioning wherever it is needed. The podium is powder coated and can be purchased in assorted colours.

**Order No. 10181**



**Starter Podium with Display  
Aluminium Surface**

The stadium podium with display is made from aluminium. It measures around 80x80 cm and it hexagonal shaped. The top of the stand is equipped with an anti-slip surface. The item is equipped with a display. For this model the display is not covered with polycarbonate sheets.

**Order No. 10180**



**Starter Podium**

The starter podium without display is made from aluminium. It measures around 80x80 cm and it hexagonal shaped. The top of the stand is equipped with an anti-slip surface.

**Order No. 10170**

\*Subject to technical alterations



#### Starting Boxes

The starting boxes are made from fibreglass reinforced plastic. The boxes also provide space to place indicator for false starts. The boxes are stackable.

**Order No. 10580**

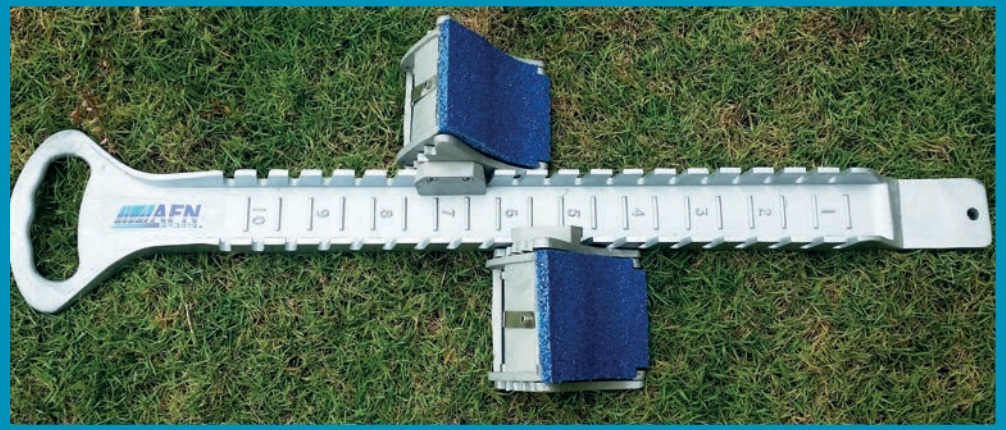


#### Finishing Post

The finishing post is made from aluminium. The posts have a square base frame. They are equipped with a mechanism to hold the finishing line. On request the item can be powder coated.

**Order No. 10200**

\*Subject to technical alterations

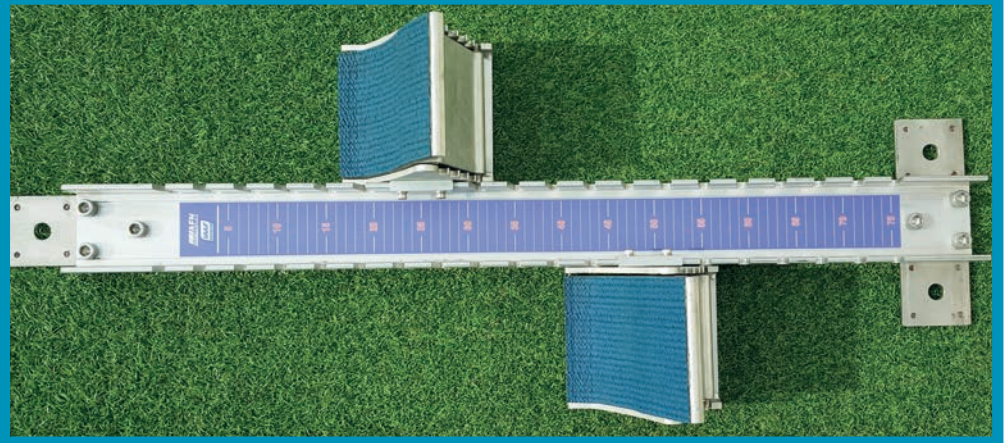


### Starting Block Model 'Olympia'

The starting block 'Olympia' is made from aluminium. The parts are casted. It is equipped with a handle. The block is fixed to the ground with spikes. The steps are covered with rubber and are height adjustable.



Order No. 10560



### Starting Block Competition

The competition starting block is made from aluminium. The parts are extruded. The block is fixed to the ground with spikes. The steps are covered with rubber and are height adjustable.



Order No. 10550



### Transport Cart For Starting Blocks

The transport trolley for starting block is made from aluminium. It provides space for a number of starting blocks. The trolley is equipped with wheels, which allow an easy handling of the stored starting blocks.

Order No. 10570

\*Subject to technical alterations



### Marker Cones (28 Cm, Synthetic)

The maker cones are made from plastic. Their height is 28 cm. The cones are available in assorted colours.

Order No	Color
11120	Blue
11130	Yellow
11140	Red
11150	Green

### Marker Cones (40 Cm, Synthetic)

The maker cones are made from plastic. Their height is 40 cm. The cones are available in assorted colours.

Order No	Color
11170	Blue
11180	Yellow
11190	Red
11200	Green



### Relay Rods

The relay batons are available in different materials and price categories. The lengths of the batons is 30 cm, The diameter is 40 mm, Each kind of the relay baton is available in assorted colours.



**Order No. 10780** Piece  
**Order No. 10781** SET ( 1 Set 8 piece)



### Lightweight Measuring Wheel

The lightweight measuring wheel is a handy precision wheel. It is equipped with a telescopic guide pole and a hinged stand. It is used to measure larger distances of running tracks, cross-country courses and other courses. It can measure up to 9999.9 m. It is possible to measure forward and backward.

**Order No. 11100**

\*Subject to technical alterations



### Referee Flags

The referee flags are made for referees to signalize their decisions. The flag measures 40 x 40 cm. It is attached to a handle pole. They are available in assorted colours.

Order No	Color
10830	Red
10840	White
10850	Blue
10860	Yellow
10870	Green



### Runner Up Marker

The runner up markers are used to help the athletes to mark their personal starting position for the run up. Therefore they are used in many athletic categories. The markers are available in assorted colours.

**Order No. 11410**



### Measurement Tapes (Fiberglass)

These measurement tapes are made from fiberglass. The material is tear resistant and waterproof. The width of the tape is 14 mm. The cover and the handle are made from plastics. The tapes are available in different lengths.

Order No	Details
10970	5m
10980	10m
10990	15m
11000	20m
11010	30m
11020	50m
11030	100m



### Measurement Tapes (Steel)

These measurement tapes are made from steel with a special white coating. . The frame and the reel are made metal. The handle is made from impact resistant PVC. The tapes are available in different lengths.

Order No	Details
11040	10m
11050	20m
11060	30m
11070	50m
11080	50m, triangular
11090	100m, triangular

\*Subject to technical alterations



### Hand Megaphone

Our Hand megaphone is an easy-to-operate, hand grip type megaphone rated at 15 W of output. The newly developed polyimide diaphragm is employed to ensure high sound quality.

**Order No. 11110**



### Marker Cones, Set of 50

The marker cones are made from durable plastic. They come in a set of 50 pieces. The cones are stackable and measure a diameter of approximately 18 cm. The height is approximately 7 cm. They come with a carrying rod. The cones are yellow, white blue, red and green.

**Order No. 11201**



### Sector Marker Tape

Sector Line Marker Tape. PVC tape, 5 cm wide. 25 & 65 m roll.

Plastic marking tape for limiting sectors, White Color, 25 meter  
**Order No. 10895**

Plastic marking tape for limiting sectors, Yellow Color, 25 meter  
**Order No. 10896**

Plastic marking tape for limiting sectors, Red Color, 25 meter  
**Order No. 10897**



Plastic marking tape for limiting sectors, White Color, 65 meter  
**Order No. 10900**

Plastic marking tape for limiting sectors, Yellow Color, 65 meter  
**Order No. 10910**

Plastic marking tape for limiting sectors, Red Color, 65 meter  
**Order No. 10920, Order No. 10930**

Fixing brackets for marking tapes  
**Order No. 10940**

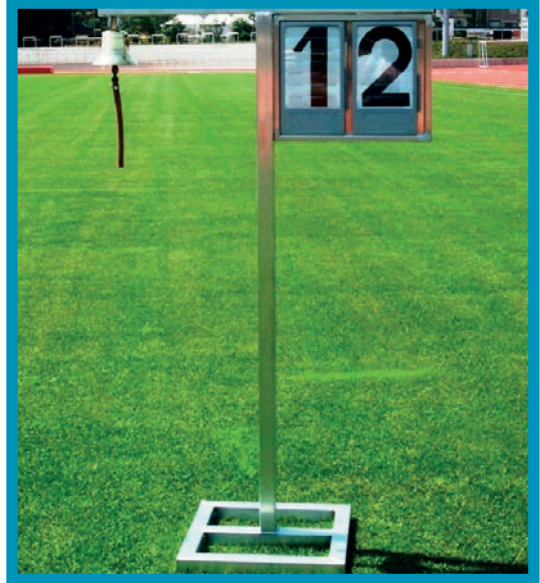
\*Subject to technical alterations



#### Mobile Display Board

The mobile display board is made from high quality aluminium profile. It is equipped with a seat, wheels and a mobile chassis. The mobile chassis provides the space to display the necessary scores. It comes with eight number plates.

**Order No. 10110**



#### Lap Indicator With Bell

The lap indicator with bell is made from aluminium. It displays the numbers of laps remaining. For the indication of the last lap the brass bell can be rung.

**Order No. 10160**



#### Wind Control Stand

The wind control stand is made from aluminium. It is equipped with a wind sock to display the wind direction. On request the item can be purchased powder coated.

**Order No. 10620**

\*Subject to technical alterations



### Athletic Bench

The athletic bench is made from special aluminium profiles. It measures a length of 2.5 m and a height of 2.1 m. The bench provides space for 10 persons. It is equipped with a collapsible roof. For safety reasons the hooks for the cloths are on the back side of the bench. The bench is equipped with a handle and two extra-large nylon wheels, which allows one single person to move the bench to the required location.

**Order No. 11220**

\*Subject to technical alterations

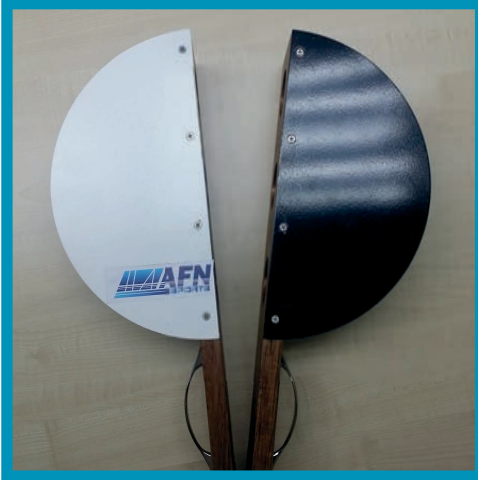




### Electronic Start Pistol

AFN electronic starting gun. Plug this gun into an amplifier and choose from 3 different tones for starting a race or getting attention: simulated gun sound for athletics, electronic beep as used in swimming and a traditional whistle tone. Also a high visibility LED light can be set to flash in all modes and is visible from 100m. Padded storage case included. Includes cord for attachment to Waist Amplifier (2-555-A), Portable Wireless Amplifier (2-553) or any standard amplifier socket. Note: The electronic gun is powered by 3 x AA batteries (not included). Included AFN loudspeaker 11110 for the best starting sound.

**Order No. 10655**



### Starting Clapper

The starting clapper is made from non chipping wood. The design is optical as well as a visual signal.

**Order No. 10662**



### Manual Wind Speed Display

The manual wind speed display is made from stable special aluminium profiles. The item is white and blue powder coated. It displays the wind speed using two digits and the direction with the +/- sign. The two number tables are included in this item.

**Order No. 10615**

\*Subject to technical alterations



### Running Track Drying Machine "Water Star"

Suction Roll WATER STAR. Water absorbing roller. The specially designed, foam covered roller absorbs water and then releases it into a plastic bucket. It operates forwards and backwards, and can be easily used by one person.

Roller width: 80 cm.

Water capacity of bucket: About 17 litres. Weighs (about 50 Kg)

**Order No. 11850**



### Compact Wind Gauge Kit

When an interface with an auto timing system is not required, this is a cost friendly alternative. Compact Wind Gauge meet requirements for IAAF and High School wind gauge rules. Complete kit including tripod and carry case. Of the crank protects fingertips from injury.

**Order No. 10611**



### Time Control Unit Digital

- Digit size: 15 cm. optimal viewing distance 60 metres with a viewing angle of 160°.
- Display of time, date and temperature, counting / countdown, rate of chlorine, rate of humidity. Fix or alternate (manual input for the rate of chlorine and humidity).
- Automatic setting of luminosity according to light exposure (sun, cloud or night).
- Setting of alternation duration (2 to 6 seconds).
- Time display: 12h or 24 h mode. Automatic summer/winter time changeover.
- Temperature display in Celsius (°C) or Fahrenheit (°F) from 99° to +99, 9°.
- Selection °C or °F in the menu. Display resolution: 0, 1°C. Accuracy: +0, 5°C from -10 to +85°C.
- Offset adjustment, possible from - 9, 9° to + 9,9°. u Display test menu.
- NTP transmission mode: multicast only.

**Order No. 11371**